



Flexible Power

Procurement Requirements

2022 PROCUREMENT CYCLE 2

Issued June 2022

Contents

Section 1 – Introduction	3
purpose of this document.....	3
Background.....	3
Description of the services we intend to procure.....	3
Section 2 – The process we will use to procure	4
Section 3 – Minimum eligibility criteria	5
Section 4 – 2022 Cycle 2 CMZ Summary	6
Section 5 - Detailed information on each CMZ’s requirement	10
Section 6 – Sources of further information	57





Section 1 – Introduction

PURPOSE OF THIS DOCUMENT

This document provides detailed information on the Constraint Management Zones (CMZs) for which Western Power Distribution intends to procure demand response services within its second procurement cycle of 2022.

BACKGROUND

Western Power Distribution (WPD) is the electricity distribution network operation for the Midlands, South West & Wales. Its network delivers electricity over a 55,500 square kilometre service area to over 8 million customers.

Access to demand response services can increase WPD's ability to accommodate demand without having to build a larger network. This means WPD can reduce overall network expenditure, resulting in a wider saving to all WPDs customers.

Flexible Power is the customer facing brand used by WPD to deliver the procurement of demand response services.

DESCRIPTION OF THE SERVICES WE INTEND TO PROCURE

WPD recognises that within its distribution area many electricity consumers have the potential to decrease demand or absorb generation by being flexible with their consumption and on-site generation. Where WPD has a known constraint on its network, it wishes to enter into contract with these consumers which will allow WPD to utilise this demand and generation flexibility in return for a payment. This type of arrangement is widely referred to as demand response.

Constraints on WPDs network are confined to specific geographical locations, WPD defines these locations as Constraint Management Zones (CMZs). WPD will be seeking to procure demand response services within CMZs it has identified and published on its [Flexible Power website](#). The website provides a map of the CMZs location, a postcode finder to allow potential demand suppliers to confirm their site is within the CMZ and the operational window the demand response will be required in. The operational window will detail; the time of year WPD will require the demand response, the time of day WPD will require the demand response and a forecast of the total MWhs WPD anticipate needing within the window. Operation windows will generally be seasonal to support the constraints within the summer and winter demand peaks. Contracts will be awarded for the minimum of 1 year, with the option to extend into further years should the CMZ have ongoing requirements. WPD may decide to award multiple contracts within a CMZ to meet its peak MW requirement. WPD will procure demand response services in alignment with the services as described in section 4 of the [Active Power Services document](#) published by the Energy Networks Association.



Section 2 – The process we will use to procure

WPD maintains a Dynamic Purchasing System (DPS) for its demand response requirements. The DPS will hold records of all potential suppliers that have passed a Pre-Qualification Questionnaire (PQQ) to ensure they meet the minimum eligibility criteria described in section 3. The PQQ does not commit either party to service provision. The PQQ will also ask for site information which will support WPD’s assessment of zone viability, and inform which zones proceed to full procurement.

In order to join the DPS, interested parties will be required to first register their interest via WPDs Periodic Indicative Notice (PIN). All parties who respond to the PIN throughout are then be asked to complete the PQQ. Parties who pass the PQQ stage are added to the DPS, these parties will receive an Invitation to Tender (ITT) to all of WPDs upcoming Demand Response requirements.

DPS registration can be accessed here: <https://fxxp.westernpower.co.uk/ECE>.

The timetable for this cycle’s procurement window is detailed below. Please note, WPD reserves the right to withdraw or add procurement at any time throughout the year.

Procurement Cycle 2

27th June 2022 – Proposed CMZs published

25th July 2022 – ITT issued to all participants accepted onto the DPS

2nd September 2022 – ITT Deadline

19th September 2022 – Contracts awarded

3rd October 2022 – Procurement results

WPD has been procuring flexibility services bi-annually since 2018, the results from previous rounds can be found [here](#).



Section 3 – Minimum eligibility criteria

To be successfully registered on the DPS parties must meet the following eligibility criteria:

- Completion of all mandatory sections of the PQQ

For a site to be successfully awarded a contract it must meet the following criteria:

- All participating asset or aggregated group of assets must be within an active CMZ.
- All participating asset or aggregated group of assets must be able to provide minute by minute metering data.
- All participating asset or aggregated group of assets must be able to respond within 15 minutes of receipt of a dispatch signal and hold the response for at least 30 minutes.
- Contracted providers will be required to build an [Application Programme Interface](#) (API), through which the asset or aggregated group of assets will receive dispatch signals and meter data will be issued to WPD.
- All participating asset or aggregated group of assets must be built or have a connection agreement with final milestone before the CMZs operating window.
- Provision of the service must not put the participant in breach of other agreements (e.g. connection agreements...).
- Acceptance of WPDs CMZ Terms & Conditions



Section 4 – 2022 Cycle 2 CMZ Summary

WPD’s 2022 cycle 2 demand respond requirements are across 47 CMZs, totalling 297.69MW. This table summarises each CMZ WPD intends to include within its second 2022 procurement cycle.

Key

D↓	Demand turn-down service required
G↑	Generation turn-up service required
D↑	Demand turn-up service required
G↓	Generation turn-down service required

Zone Name	Zone Location	Applicable Products	Response Type	MW Peak	Season
East Midlands					
Alfreton	Derbyshire	Secure	D↓ G↑	3.1	Summer
Apollo - Tamworth	Staffordshire	Secure	D↓ G↑	0.95	Winter
Berkswell SGT	Berkswell	Secure	D↓ G↑	10.15	Summer
Chesterfield Main	Chesterfield	Secure	D↓ G↑	3.88	Winter
Clowne	Mansfield	Dynamic	D↓ G↑	1.42	Winter
Coalville	Leicestershire	Dynamic	D↓ G↑	35.4	Winter/Summer



Zone Name	Zone Location	Applicable Products	Response Type	MW Peak	Season
Grassmoor	Chesterfield	Secure	D↓ G↑	2.73	Winter/Summer
Grendon - Corby 132kV	Northamptonshire	Secure	D↓ G↑	17.71	Summer
Ilkeston	Derbyshire	Dynamic	D↓ G↑	10.23	Winter/Summer
Lincoln-Anderson Lane	Lincolnshire	Secure	D↓ G↑	5.2	Winter
Loughborough	Loughborough	Dynamic	D↓ G↑	15.83	Winter/Summer
Mackworth	Derbyshire	Secure	D↓ G↑	1.32	Winter
Manton	Oakham	Secure	D↓ G↑	2.18	Winter/Summer
New Dove Valley	Derbyshire	Secure	D↓ G↑	2.27	Winter/Summer
Sharnbrook	Bedfordshire	Dynamic	D↓ G↑	5.34	Winter
Woodbeck	Retford	Dynamic	D↓ G↑	2.19	Winter/Summer
South Wales					
Aberaeron	Ceredigion	Dynamic	D↓ G↑	0.74	Winter/Summer
East Aberthaw	Aberthaw	Dynamic	D↓ G↑	10.89	Summer
Llandrindod - Rhayader	South Wales	Dynamic	D↓ G↑	1.13	Winter/Summer
Llanfyrnach	Pembrokeshire	Dynamic	D↓ G↑	2.71	Winter
Mountain Ash	Rhondda Cynon Taf	Secure	D↓ G↑	1.62	Winter
Pembroke - BroadField	South Wales	Dynamic	D↓ G↑	1.65	Winter/Summer



Zone Name	Zone Location	Applicable Products	Response Type	MW Peak	Season
Pembroke - St Florence	South Wales	Dynamic	D↓ G↑	0.78	Winter/Summer
Pembroke - Tenby	South Wales	Dynamic	D↓ G↑	5.8	Winter/Summer
Trevaughan	South Wales	Secure	D↓ G↑	3.01	Winter
South West					
Bridgwater/Street	Somerset	Dynamic	D↓ G↑	15.06	Summer
Chewton Mendip	Somerset	Secure	D↓ G↑	0.05	Winter
Countess Wear	Devon	Secure	D↓ G↑	0.91	Winter
East Yelland	Devon	Dynamic	D↓ G↑	6.89	Winter
Gunnislake	Cornwall	Secure	D↓ G↑	1.24	Winter
Hayle - Camborne	Cornwall	Dynamic	D↓ G↑	51.24	Winter/Summer
Hemyock	Devon	Dynamic	D↓ G↑	1.37	Winter/Summer
Isles of Scilly	Isles of Scilly	Secure	D↓ G↑	0.31	Winter
Laneast	Cornwall	Secure	D↓ G↑	0.32	Winter
Moretonhampstead	Newton Abbot North	Dynamic	D↓ G↑	0.82	Winter
Morwenstow	Cornwall	Dynamic	D↓ G↑	1.15	Winter
Mullion	Cornwall	Secure	D↓ G↑	1.17	Winter
Probus	Cornwall	Secure	D↓ G↑	10.66	Winter



Zone Name	Zone Location	Applicable Products	Response Type	MW Peak	Season
Roundswell	Devon	Secure	D↓ G↑	1.7	Winter/Summer
Stokenham	South Hams	Secure	D↓ G↑	0.3	Winter
Tiverton	Devon	Dynamic	D↓ G↑	11.82	Winter
Truro - Truro Treyew	Truro - Truro Treyew	Dynamic	D↓ G↑	6.7	Winter
Weston Super Mare	Somerset	Dynamic	D↓ G↑	8.49	Winter
Witheridge	Devon	Secure	D↓ G↑	0.64	Winter/Summer
West Midlands					
Feckenham South	Worcestershire	Dynamic	D↓ G↑	16.61	Winter
Hereford - Ledbury Ring	Herefordshire	Secure	D↓ G↑	6.93	Winter
Hereford BSP	Hereford BSP	Secure	D↓ G↑	5.08	Winter

Section 5 - Detailed information on each CMZ's requirement

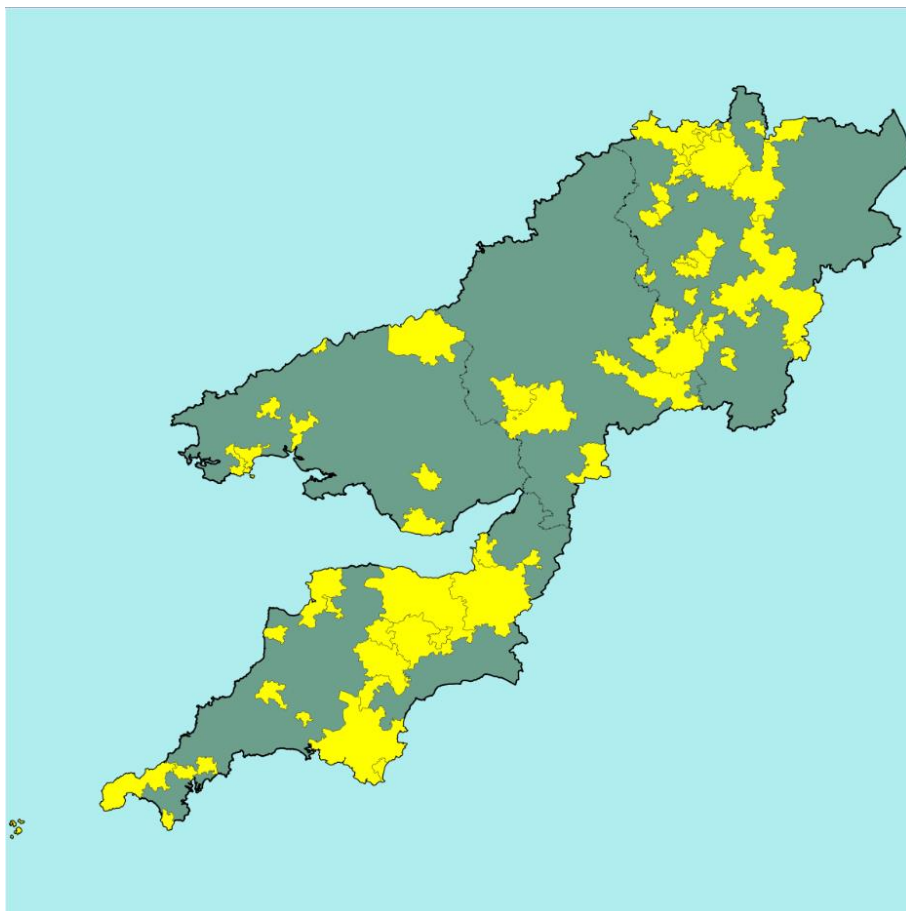


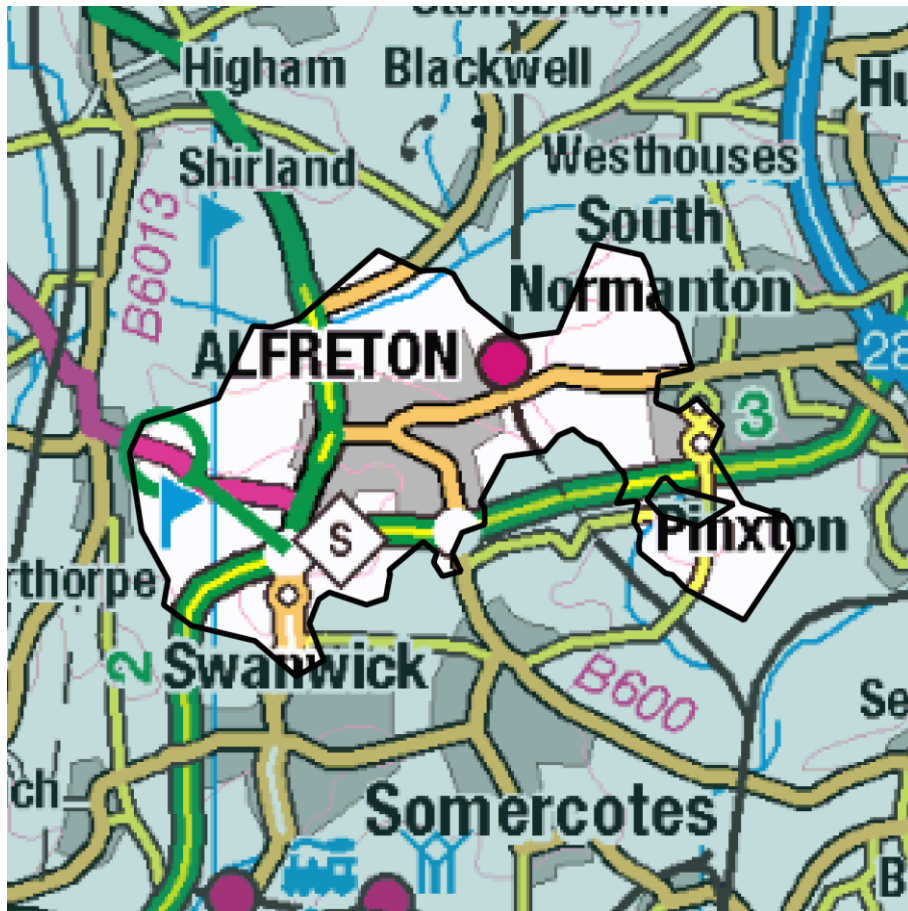
Image: map of WPD licence areas showing all CMZs included in the 2022 demand response procurement cycle 1.

The following pages provide detail on each of the CMZs WPD propose to include in the 2022 demand response procurement cycle 2.

In addition, a data set containing compiled requirements for all CMZs, power profile, volumes, MWhs etc., is available to download [here](#).



Flexibility Analysis Report for CMZ_T4A_EM_0016 - Alfreton



Products	Season	MW Peak	Response
Secure & Restore	Summer	3.10	D↓ G↑

More information about this zone:

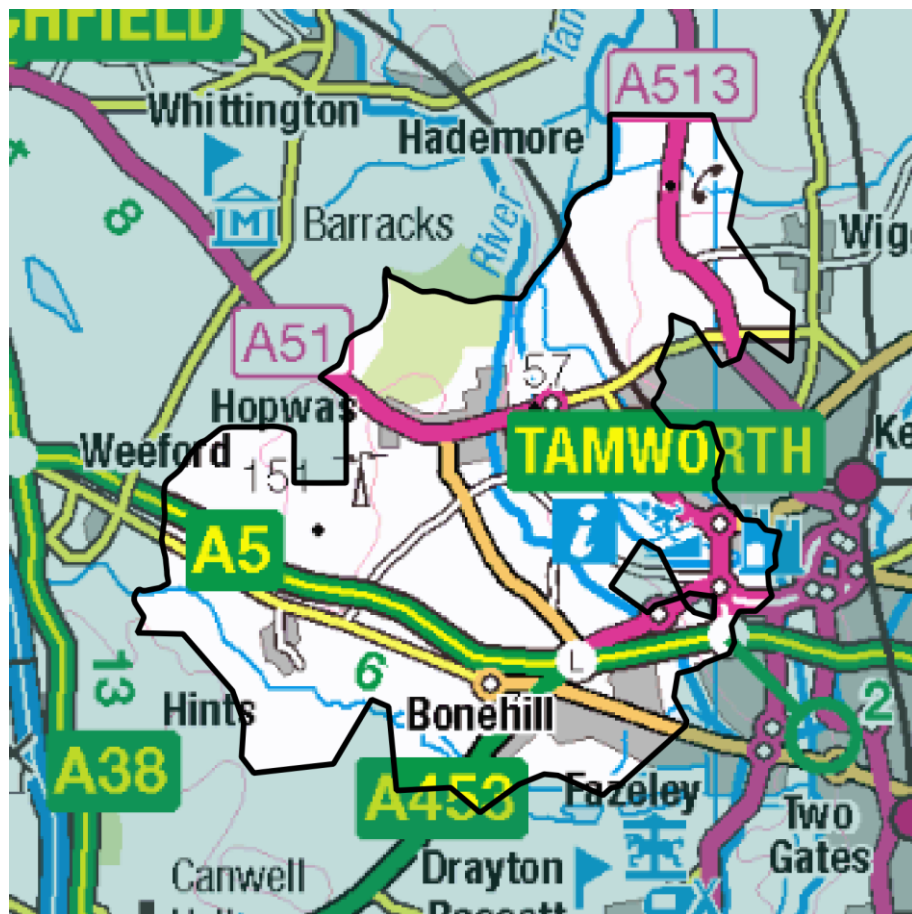
https://www.flexiblepower.co.uk/wpd-scheme/CMZ_T4A_EM_0016/2022

is the dedicated scheme page for this zone on the Flexible Power website, here you can view;

- Availability windows
- Monthly profiles
- Service overview
- Valuation tool
- Postcode checker
- Register interest



Flexibility Analysis Report for CMZ_T4A_EM_0009 - Apollo – Tamworth



Products	Season	MW Peak	Response
Secure & Restore	Winter	0.95	D↓ G↑

More information about this zone:

https://www.flexiblepower.co.uk/wpd-scheme/CMZ_T4A_EM_0009/2022
is the dedicated scheme page for this zone on the Flexible

Power website, here you can view;

- Availability windows
- Monthly profiles
- Service overview
- Valuation tool
- Postcode checker
- Register interest

Flexibility Analysis Report for CMZ_T5A_EM_0023 - Berkswell SGT



Products	Season	MW Peak	Response
Secure & Restore	Summer	10.15	D↓ G↑

More information about this zone:

https://www.flexiblepower.co.uk/wpd-scheme/CMZ_T5A_EM_0023/2022

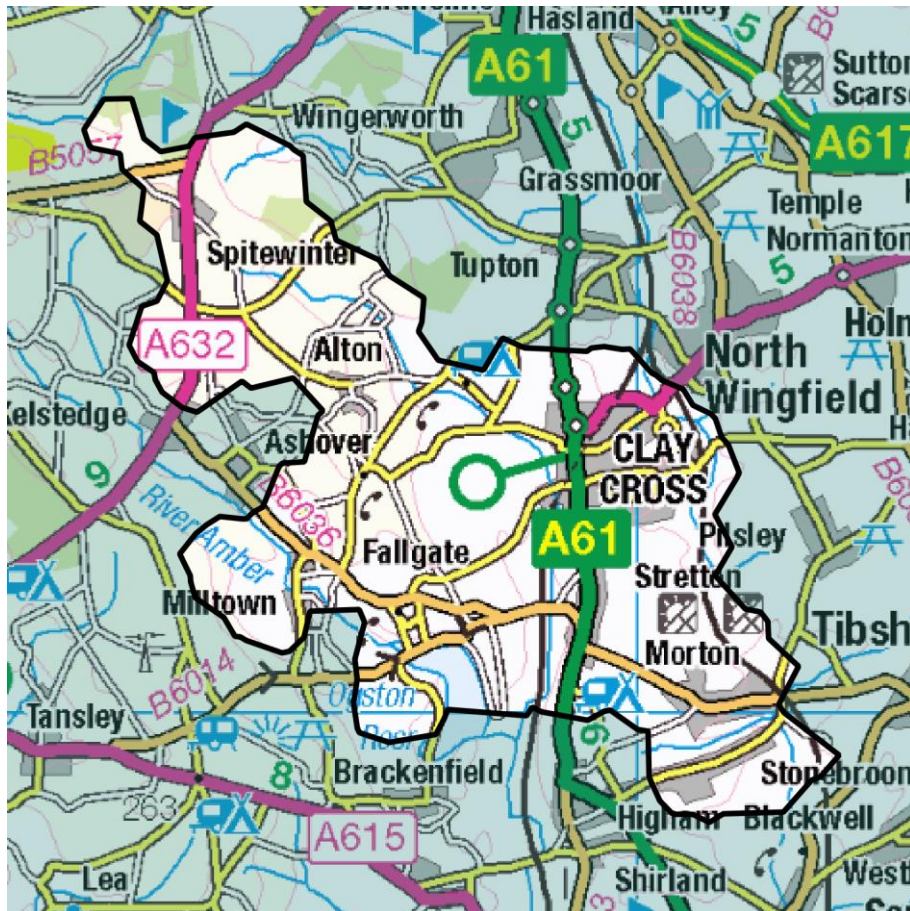
is the dedicated scheme page for this zone on the Flexible

Power website, here you can view;

- Availability windows
- Monthly profiles
- Service overview
- Valuation tool
- Postcode checker
- Register interest



Flexibility Analysis Report for CMZ_T4A_EM_0010 - Chesterfield Main



Products	Season	MW Peak	Response
Secure & Restore	Winter	3.88	D↓ G↑

More information about this zone:

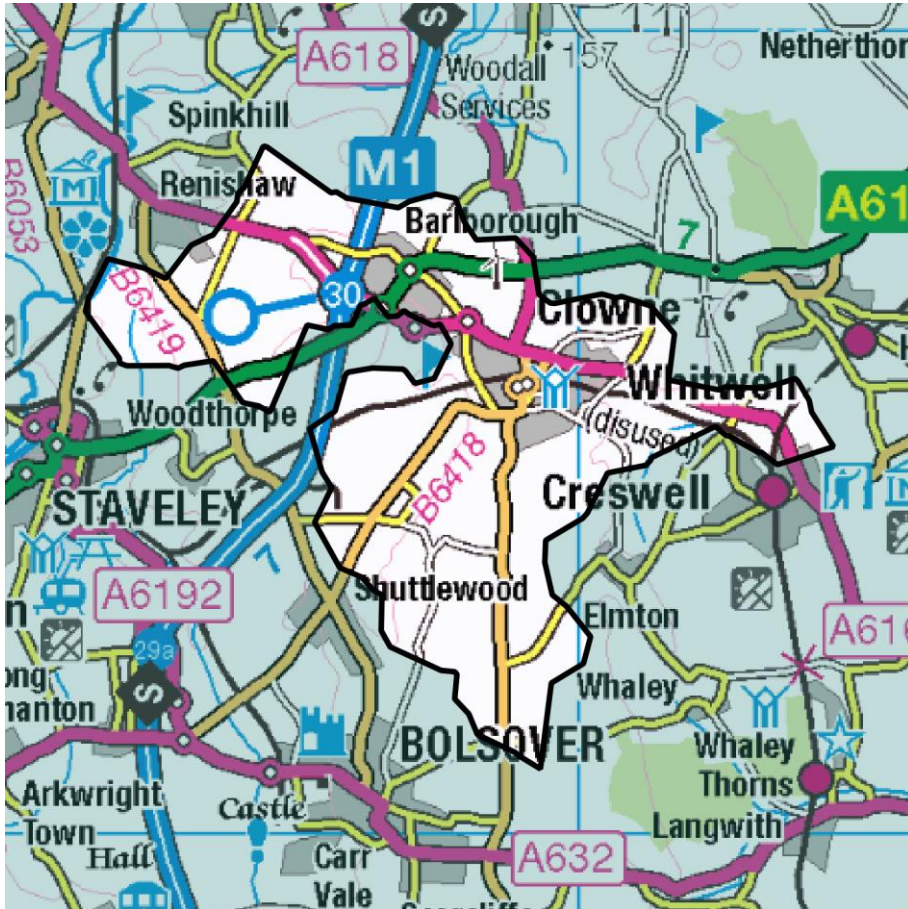
https://www.flexiblepower.co.uk/wpd-scheme/CMZ_T4A_EM_0010/2022 is the dedicated scheme page for this zone on the Flexible

Power website, here you can view;

- Availability windows
- Monthly profiles
- Service overview
- Valuation tool
- Postcode checker
- Register interest



Flexibility Analysis Report for CMZ_T4A_EM_0011 – Clowne



Products	Season	MW Peak	Response
Dynamic & Restore	Winter	1.42	D↓ G↑

More information about this zone:

https://www.flexiblepower.co.uk/wpd-scheme/CMZ_T4A_EM_0011/2022

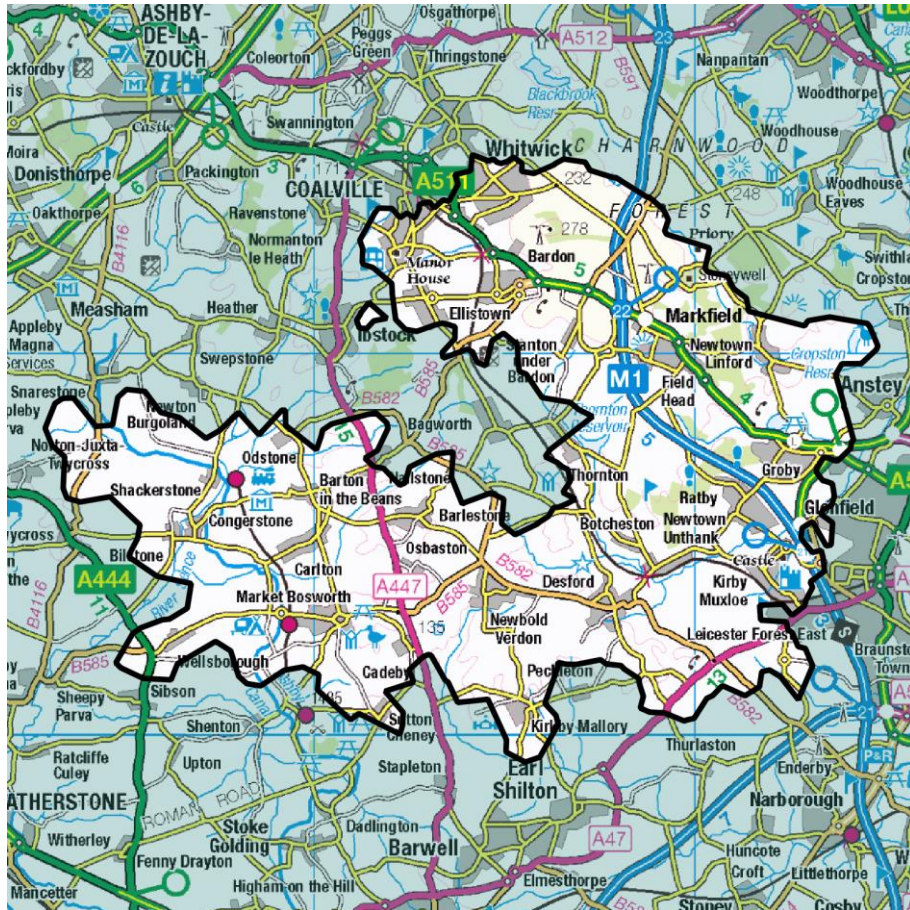
is the dedicated scheme page for this zone on the Flexible

Power website, here you can view;

- Availability windows
- Monthly profiles
- Service overview
- Valuation tool
- Postcode checker
- Register interest



Flexibility Analysis Report for CMZ_T4A_EM_0012 – Coalville



Products	Season	MW Peak	Response
Dynamic & Restore	Winter/Summer	35.40	D↓ G↑

More information about this zone:

https://www.flexiblepower.co.uk/wpd-scheme/CMZ_T4A_EM_0012/2022

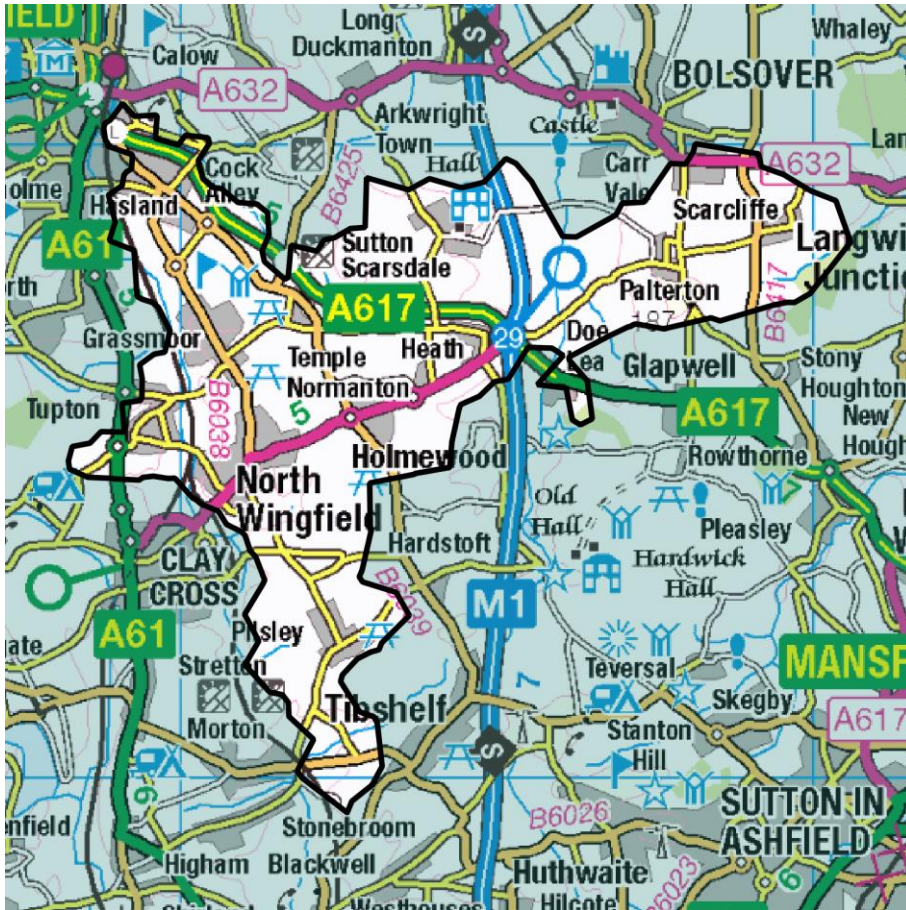
is the dedicated scheme page for this zone on the Flexible

Power website, here you can view;

- Availability windows
- Monthly profiles
- Service overview
- Valuation tool
- Postcode checker
- Register interest



Flexibility Analysis Report for CMZ_T4A_EM_0013 – Grassmoor



Products	Season	MW Peak	Response
Secure & Restore	Winter/Summer	2.73	D↓ G↑

More information about this zone:

https://www.flexiblepower.co.uk/wpd-scheme/CMZ_T4A_EM_0013/2022

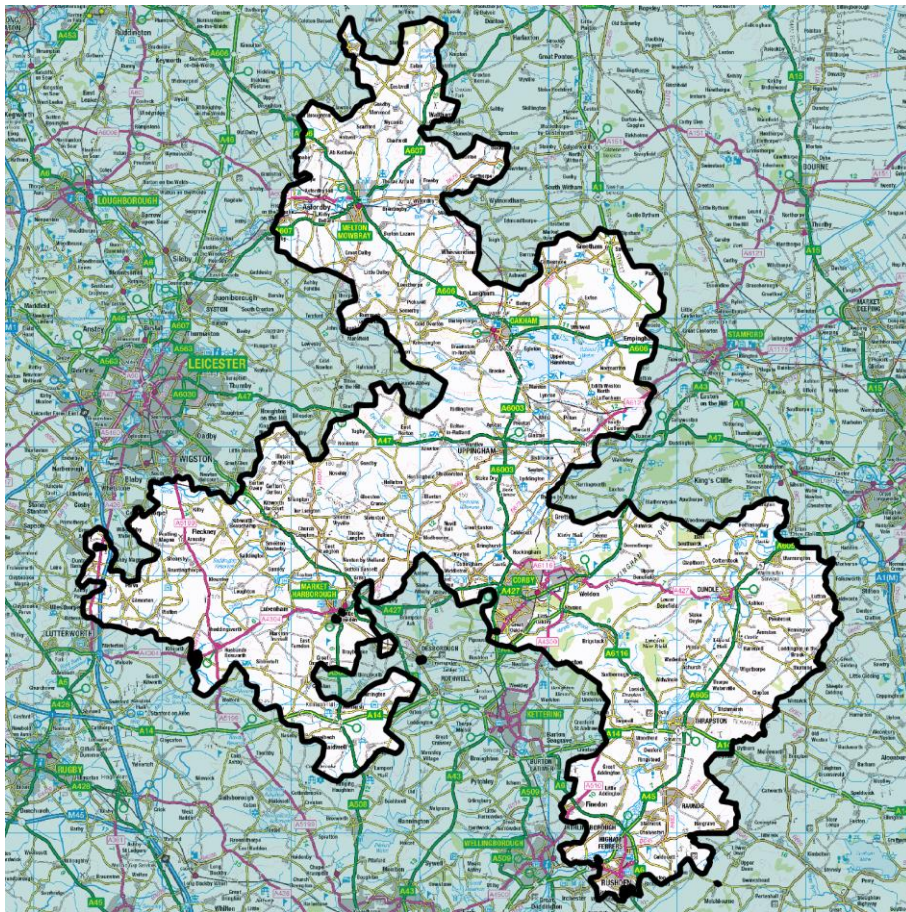
is the dedicated scheme page for this zone on the Flexible

Power website, here you can view;

- Availability windows
- Monthly profiles
- Service overview
- Valuation tool
- Postcode checker
- Register interest



Flexibility Analysis Report for CMZ_T6A_EM_0029 - Grendon - Corby 132kV



Products	Season	MW Peak	Response
Secure & Restore	Summer	17.71	D↓ G↑

More information about this zone:

https://www.flexiblepower.co.uk/wpd-scheme/CMZ_T6A_EM_0029/2022

is the dedicated scheme page for this zone on the Flexible

Power website, here you can view;

- Availability windows
- Monthly profiles
- Service overview
- Valuation tool
- Postcode checker
- Register interest



Flexibility Analysis Report for CMZ_T5B_EM_0028 – Ilkeston



Products	Season	MW Peak	Response
Dynamic & Restore	Winter/Summer	10.23	D↓ G↑

More information about this zone:

https://www.flexiblepower.co.uk/wpd-scheme/CMZ_T5B_EM_0028/2022

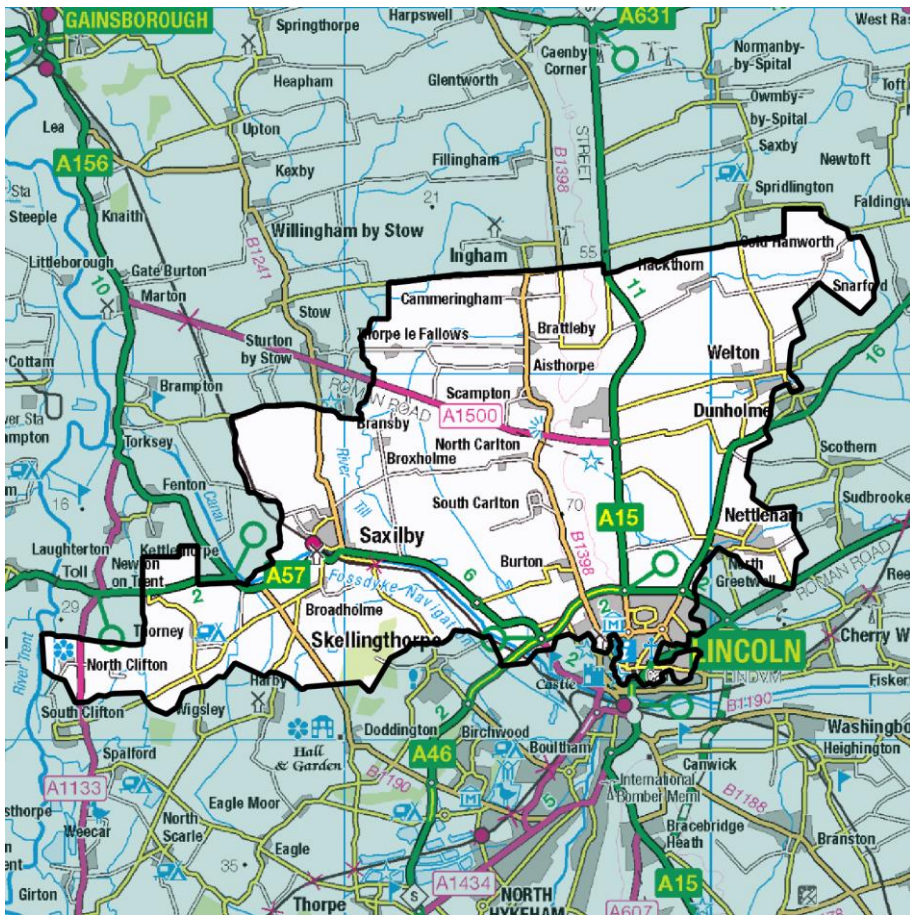
is the dedicated scheme page for this zone on the Flexible

Power website, here you can view;

- Availability windows
- Monthly profiles
- Service overview
- Valuation tool
- Postcode checker
- Register interest



Flexibility Analysis Report for CMZ_T4B_EM_0002 - Lincoln -Anderson Lane



Products	Season	MW Peak	Response
Secure & Restore	Winter	5.20	D↓ G↑

More information about this zone:

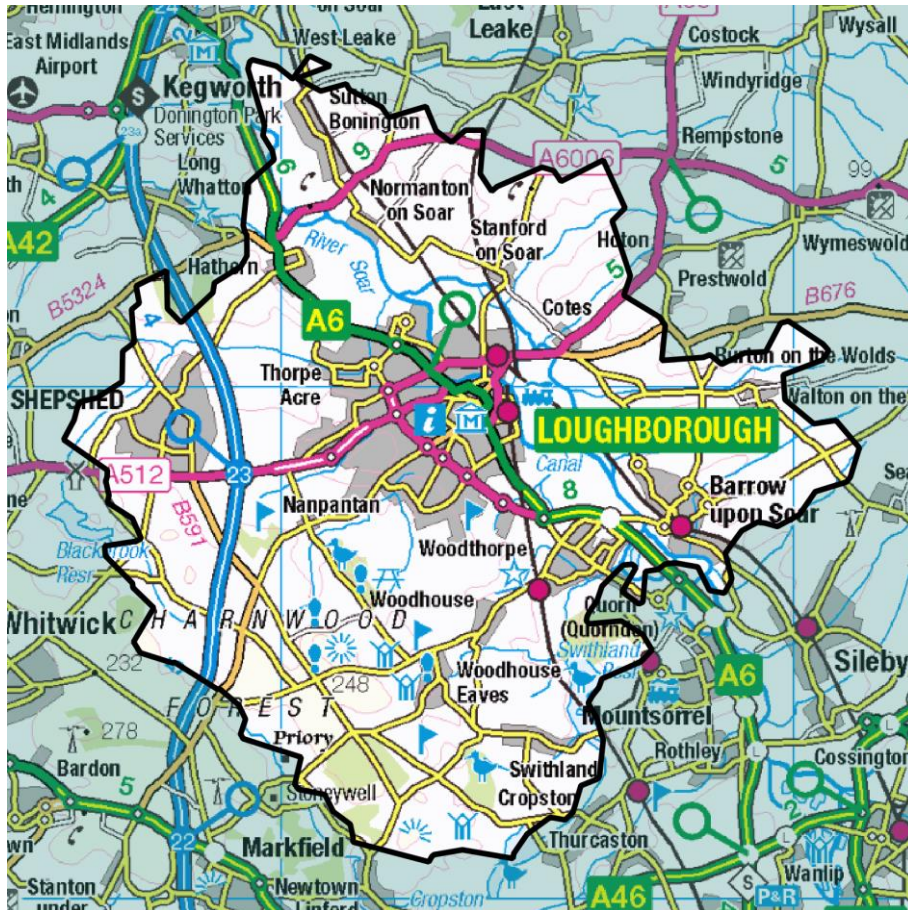
https://www.flexiblepower.co.uk/wpd-scheme/CMZ_T4B_EM_0002/2022

is the dedicated scheme page for this zone on the Flexible Power website, here you can view;

- Availability windows
- Monthly profiles
- Service overview
- Valuation tool
- Postcode checker
- Register interest



Flexibility Analysis Report for CMZ_T5A_EM_0024 – Loughborough



Products	Season	MW Peak	Response
Dynamic & Restore	Winter/Summer	15.83	D↓ G↑

More information about this zone:

https://www.flexiblepower.co.uk/wpd-scheme/CMZ_T5A_EM_0024/2022

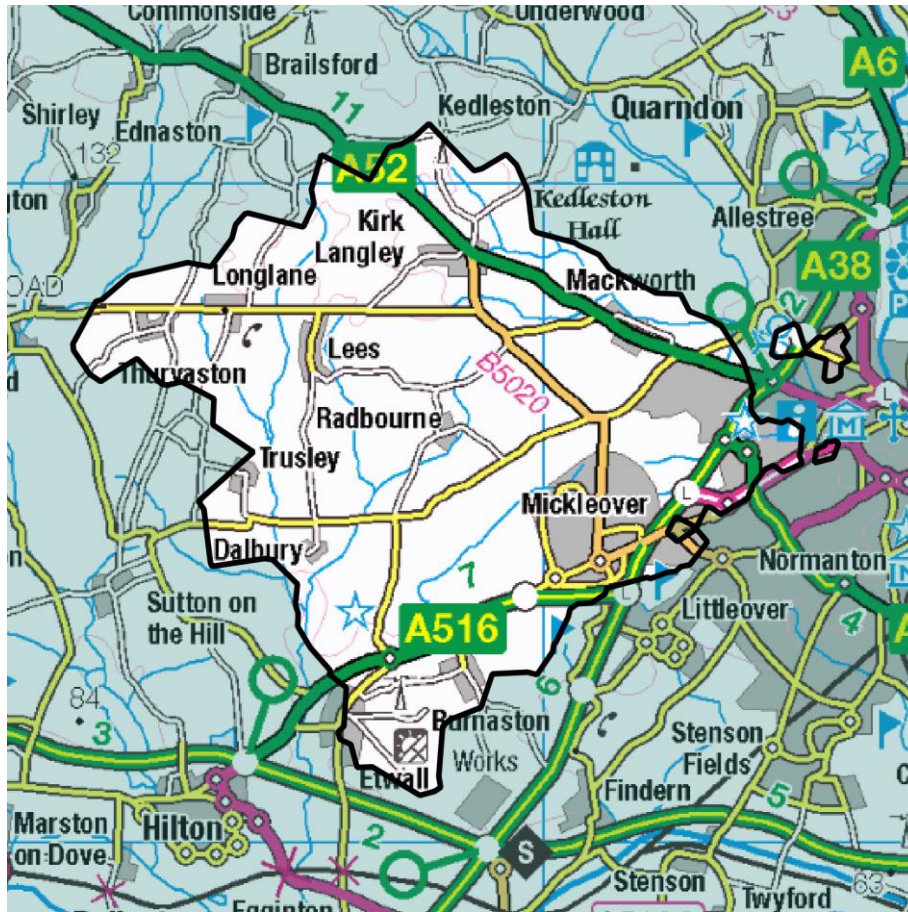
is the dedicated scheme page for this zone on the Flexible

Power website, here you can view;

- Availability windows
- Monthly profiles
- Service overview
- Valuation tool
- Postcode checker
- Register interest



Flexibility Analysis Report for CMZ_T5A_EM_0025 – Mackworth



Products	Season	MW Peak	Response
Secure & Restore	Winter	1.32	D↓ G↑

More information about this zone:

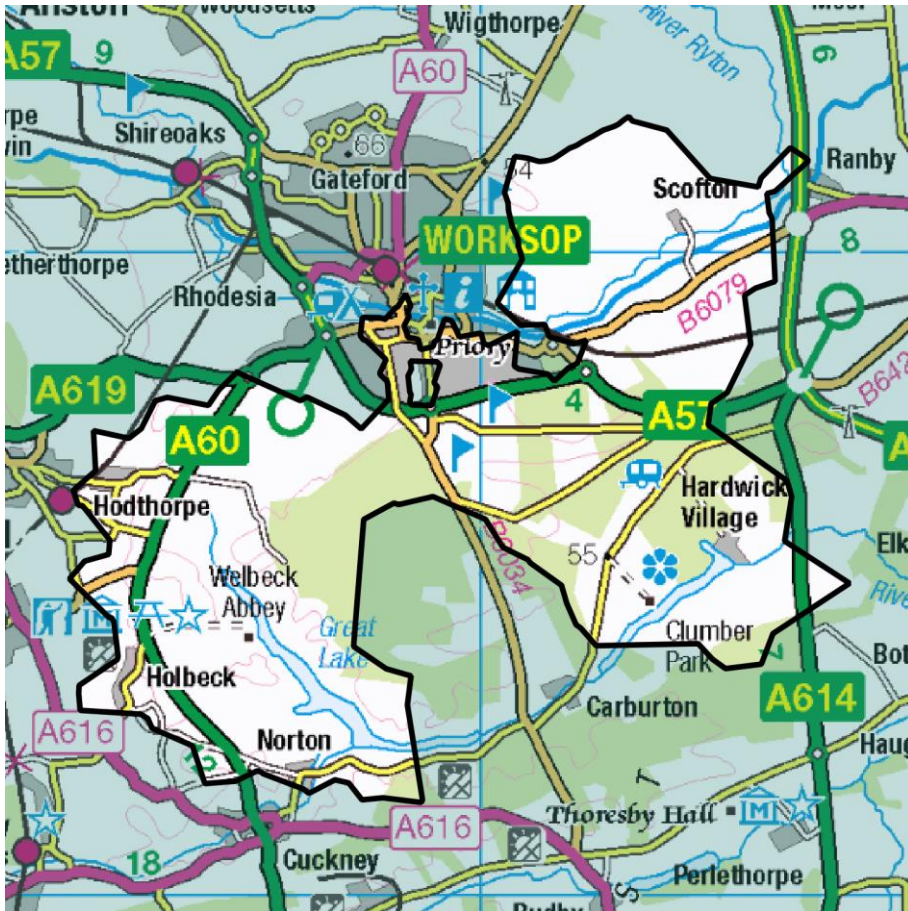
https://www.flexiblepower.co.uk/wpd-scheme/CMZ_T5A_EM_0025/2022

is the dedicated scheme page for this zone on the Flexible Power website, here you can view;

- Availability windows
- Monthly profiles
- Service overview
- Valuation tool
- Postcode checker
- Register interest



Flexibility Analysis Report for CMZ_T5A_EM_0026 – Manton



Products	Season	MW Peak	Response
Secure & Restore	Winter/Summer	2.18	D↓ G↑

More information about this zone:

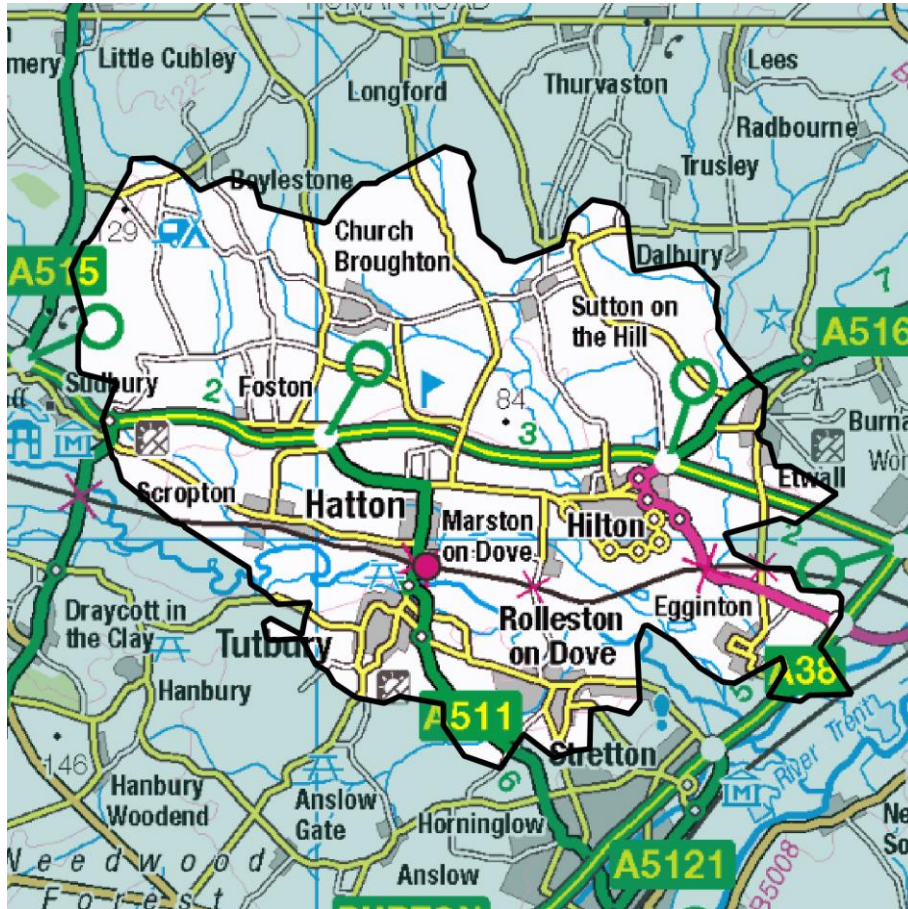
https://www.flexiblepower.co.uk/wpd-scheme/CMZ_T5A_EM_0026/2022

Is the dedicated scheme page for this zone on the Flexible Power website, here you can view;

- Availability windows
- Monthly profiles
- Service overview
- Valuation tool
- Postcode checker
- Register interest



Flexibility Analysis Report for CMZ_T5A_EM_0027 – New Dove Valley



Products	Season	MW Peak	Response
Secure & Restore	Winter/Summer	2.27	D↓ G↑

More information about this zone:

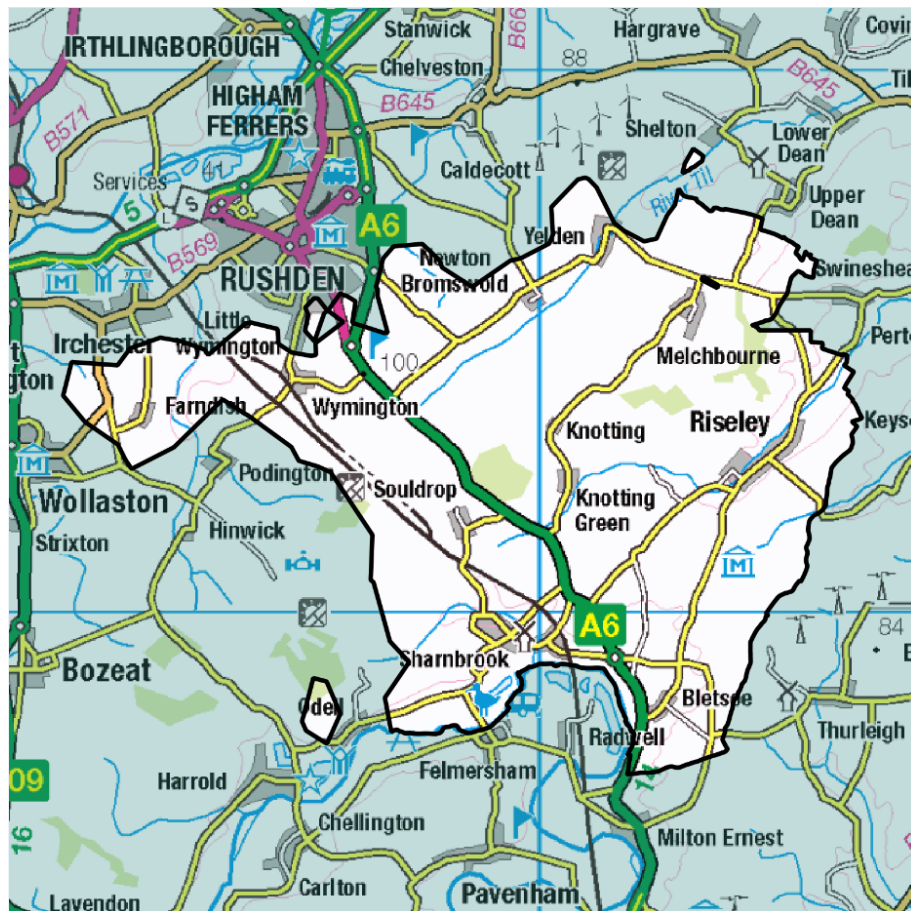
https://www.flexiblepower.co.uk/wpd-scheme/CMZ_T5A_EM_0027/2022

Is the dedicated scheme page for this zone on the Flexible Power website, here you can view;

- Availability windows
- Monthly profiles
- Service overview
- Valuation tool
- Postcode checker
- Register interest



Flexibility Analysis Report for CMZ_T6B_EM_0030 - Sharnbrook



Products	Season	MW Peak	Response
Dynamic & Restore	Winter	5.34	D↓ G↑

More information about this zone:

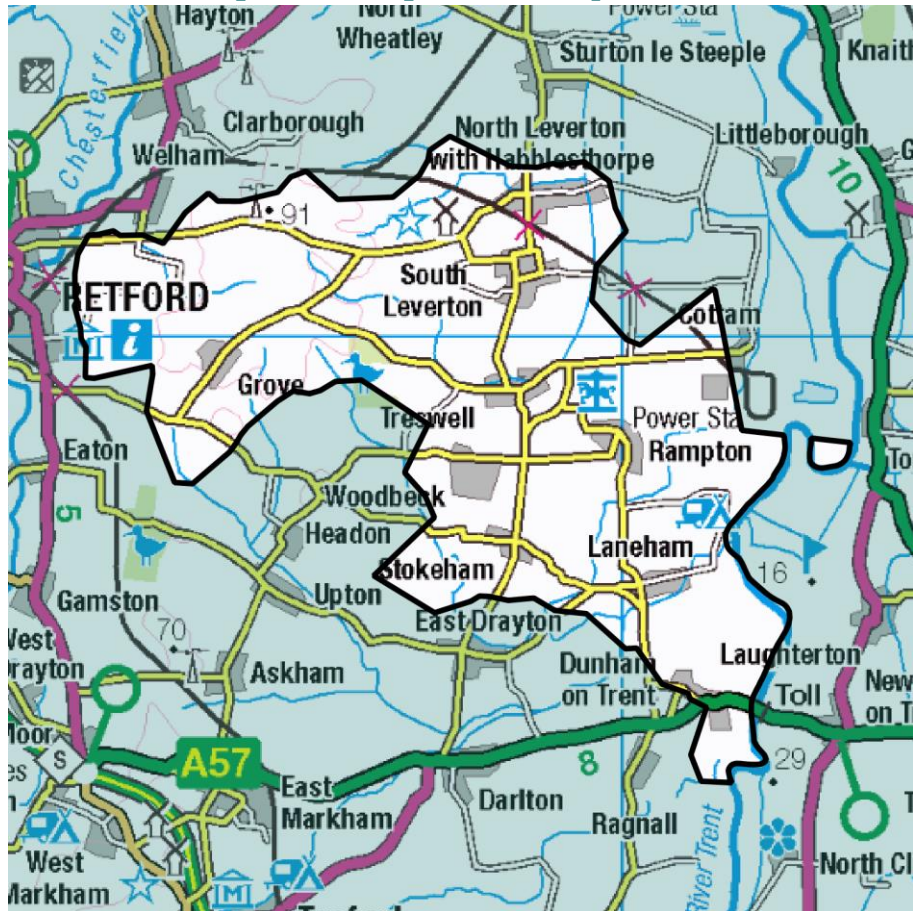
https://www.flexiblepower.co.uk/wpd-scheme/CMZ_T6B_EM_0030/2022

Is the dedicated scheme page for this zone on the Flexible Power website, here you can view;

- Availability windows
- Monthly profiles
- Service overview
- Valuation tool
- Postcode checker
- Register interest



Flexibility Analysis Report for CMZ_T4A_EM_0020 – Woodbeck



Products	Season	MW Peak	Response
Dynamic & Restore	Winter/Summer	2.19	D↓ G↑

More information about this zone:

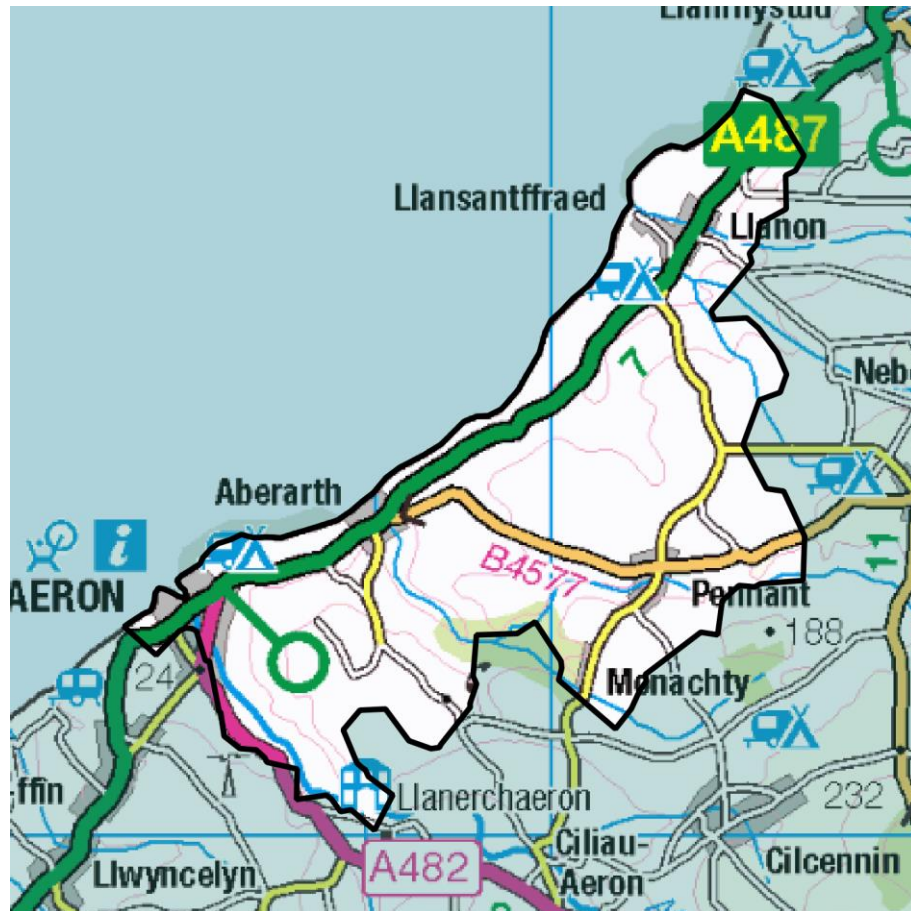
https://www.flexiblepower.co.uk/wpd-scheme/CMZ_T4A_EM_0020/2022

is the dedicated scheme page for this zone on the Flexible Power website, here you can view;

- Availability windows
- Monthly profiles
- Service overview
- Valuation tool
- Postcode checker
- Register interest



Flexibility Analysis Report for CMZ_T5B_SWA_0008 – Aberaeron



Products	Season	MW Peak	Response
Dynamic & Restore	Winter/Summer	0.74	D↓ G↑

More information about this zone:

https://www.flexiblepower.co.uk/wpd-scheme/CMZ_T5B_SWA_0008/2022

is the dedicated scheme page for this zone on the Flexible Power website, here you can view;

- Availability windows
- Monthly profiles
- Service overview
- Valuation tool
- Postcode checker
- Register interest



Flexibility Analysis Report for CMZ_T5A_SWA_0006 – East Aberthaw



Products	Season	MW Peak	Response
Dynamic & Restore	Summer	10.89	D↓ G↑

More information about this zone:

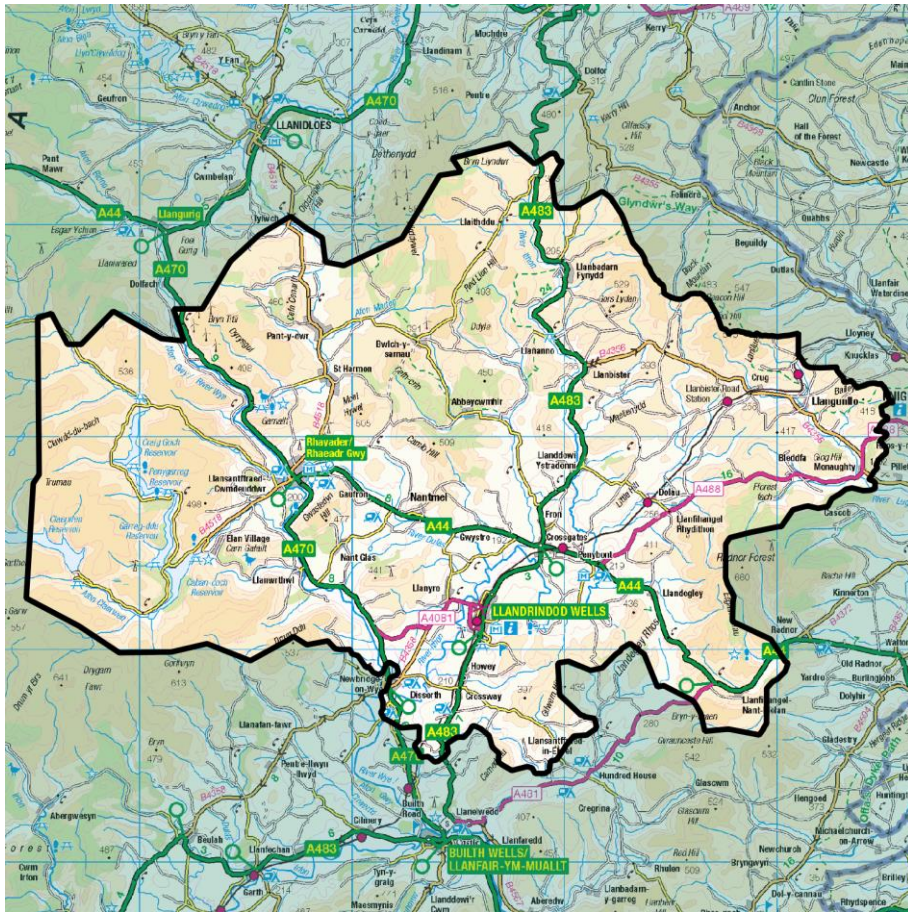
https://www.flexiblepower.co.uk/wpd-scheme/CMZ_T5A_SWA_0006/2022

is the dedicated scheme page for this zone on the Flexible Power website, here you can view;

- Availability windows
- Monthly profiles
- Service overview
- Valuation tool
- Postcode checker
- Register interest



Flexibility Analysis Report for CMZ_T4A_SWA_0001 - Llandrindod – Rhayader



Products	Season	MW Peak	Response
Dynamic & Restore	Winter/Summer	1.13	D↓ G↑

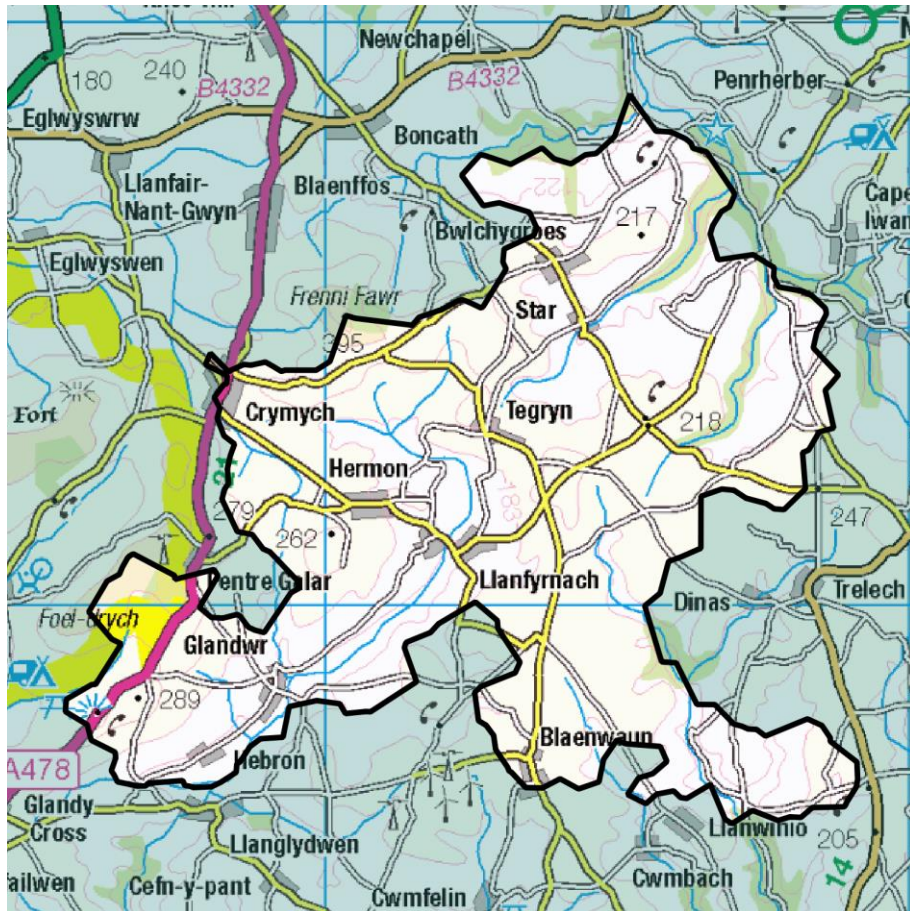
More information about this zone:

https://www.flexiblepower.co.uk/wpd-scheme/CMZ_T4A_SWA_0001/2022

is the dedicated scheme page for this zone on the Flexible Power website, here you can view;

- Availability windows
- Monthly profiles
- Service overview
- Valuation tool
- Postcode checker
- Register interest

Flexibility Analysis Report for CMZ_T5B_SWA_0009 - Llanfyrnach



Products	Season	MW Peak	Response
Dynamic & Restore	Winter	2.71	D↓ G↑

More information about this zone:

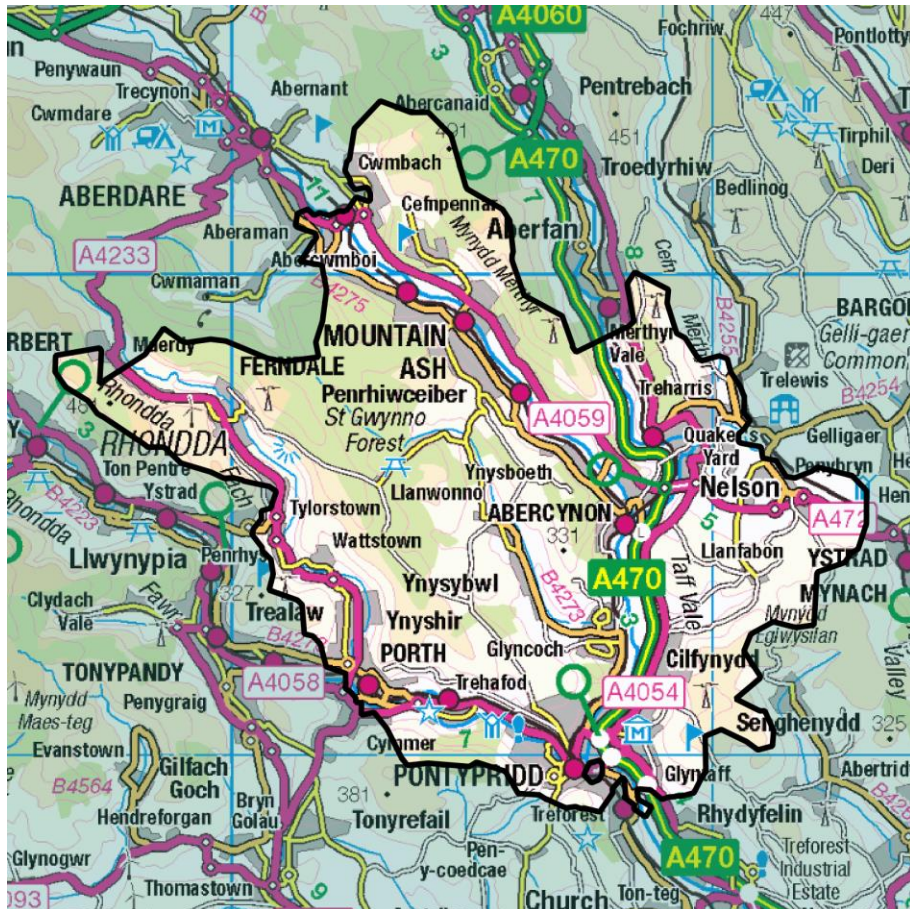
https://www.flexiblepower.co.uk/wpd-scheme/CMZ_T5B_SWA_0009/2022

is the dedicated scheme page for this zone on the Flexible Power website, here you can view;

- Availability windows
- Monthly profiles
- Service overview
- Valuation tool
- Postcode checker
- Register interest



Flexibility Analysis Report for CMZ_T5A_SWA_0007 - Mountain Ash



Products	Season	MW Peak	Response
Secure & Restore	Winter	1.62	D↓ G↑

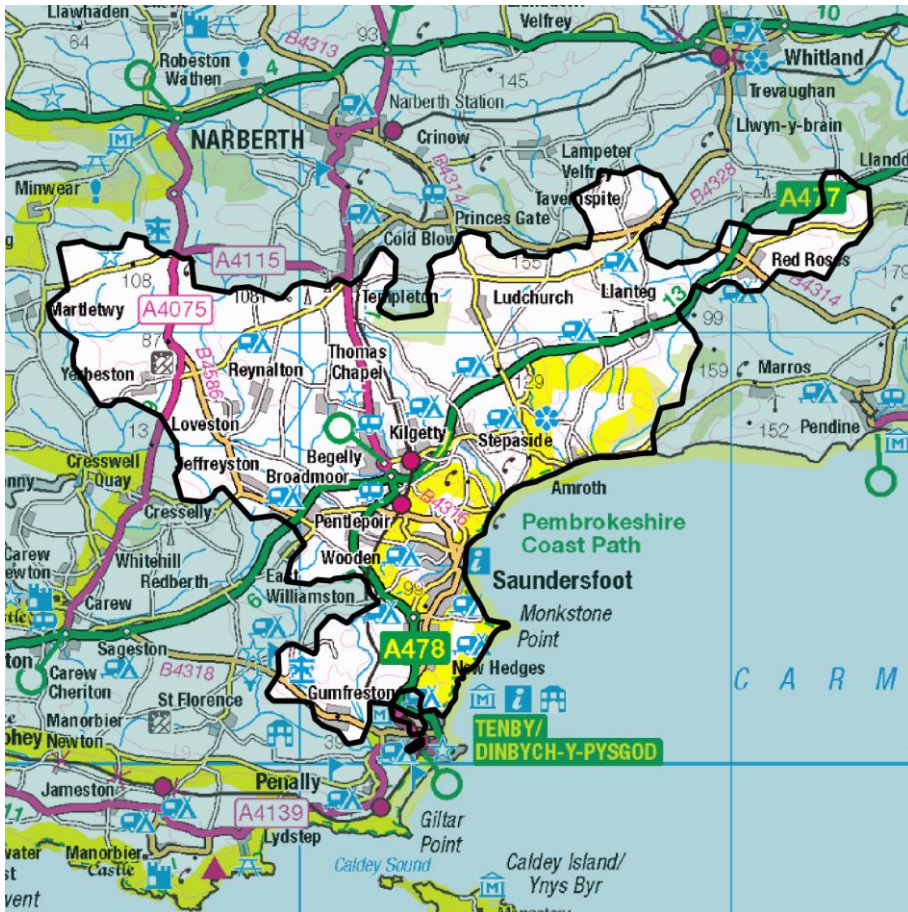
More information about this zone:

https://www.flexiblepower.co.uk/wpd-scheme/CMZ_T5A_SWA_0007/2022 is the dedicated scheme page for this zone on the Flexible Power website, here you can view;

- Availability windows
- Monthly profiles
- Service overview
- Valuation tool
- Postcode checker
- Register interest



Flexibility Analysis Report for CMZ_T4A_SWA_0003_P1 - Pembroke – Broadfield



Products	Season	MW Peak	Response
Dynamic & Restore	Winter/Summer	1.65	D↓ G↑

More information about this zone:

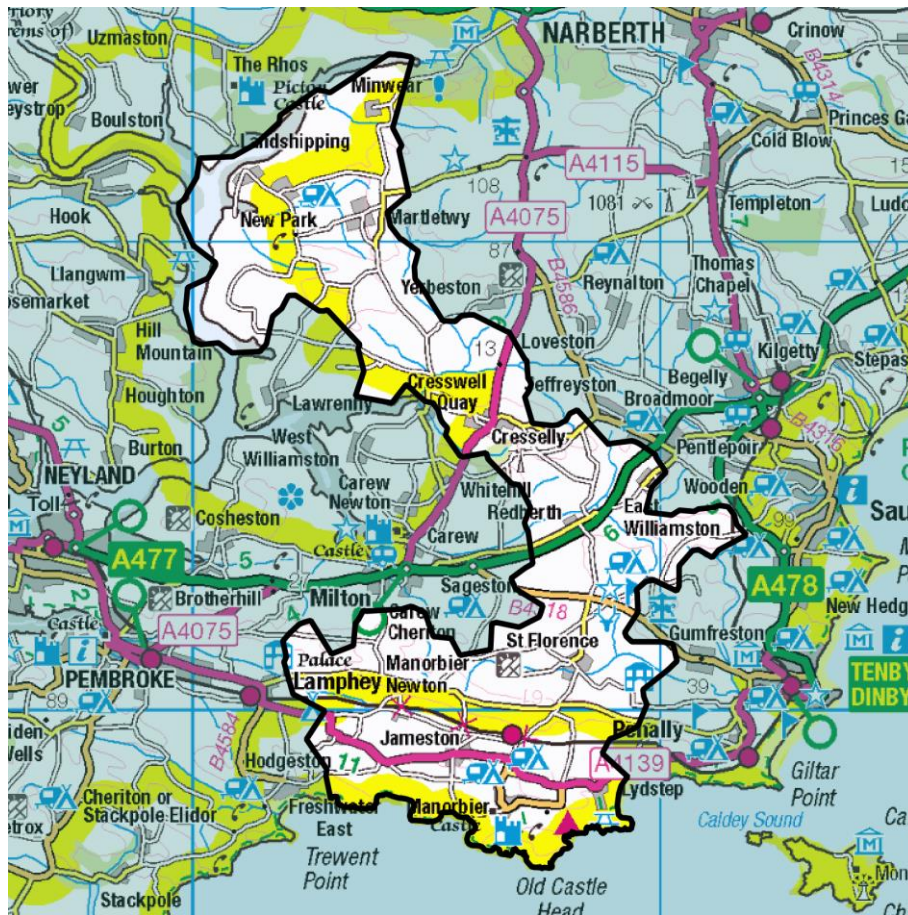
https://www.flexiblepower.co.uk/wpd-scheme/CMZ_T4A_SWA_0003_P1/2022

is the dedicated scheme page for this zone on the Flexible Power website, here you can view;

- Availability windows
- Monthly profiles
- Service overview
- Valuation tool
- Postcode checker
- Register interest



Flexibility Analysis Report for CMZ_T4A_SWA_0003_P3 - Pembroke - St Florence



Products	Season	MW Peak	Response
Dynamic & Restore	Winter/Summer	0.78	D↓ G↑

More information about this zone:

https://www.flexiblepower.co.uk/wpd-scheme/CMZ_T4A_SWA_0003_P3/2022

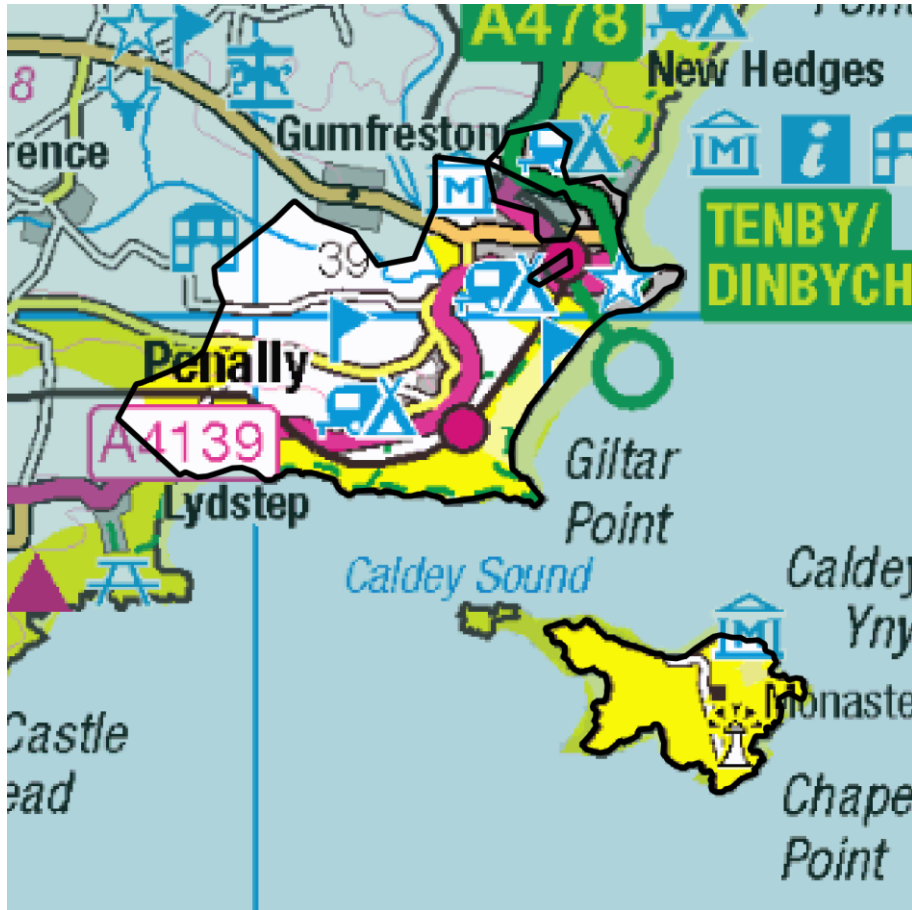
is the dedicated scheme page for this zone on the Flexible

Power website, here you can view;

- Availability windows
- Monthly profiles
- Service overview
- Valuation tool
- Postcode checker
- Register interest



Flexibility Analysis Report for CMZ_T4A_SWA_0003_P2 - Pembroke – Tenby



Products	Season	MW Peak	Response
Dynamic & Restore	Winter/Summer	5.80	D↓ G↑

More information about this zone:

https://www.flexiblepower.co.uk/wpd-scheme/CMZ_T4A_SWA_0003_P2/2022

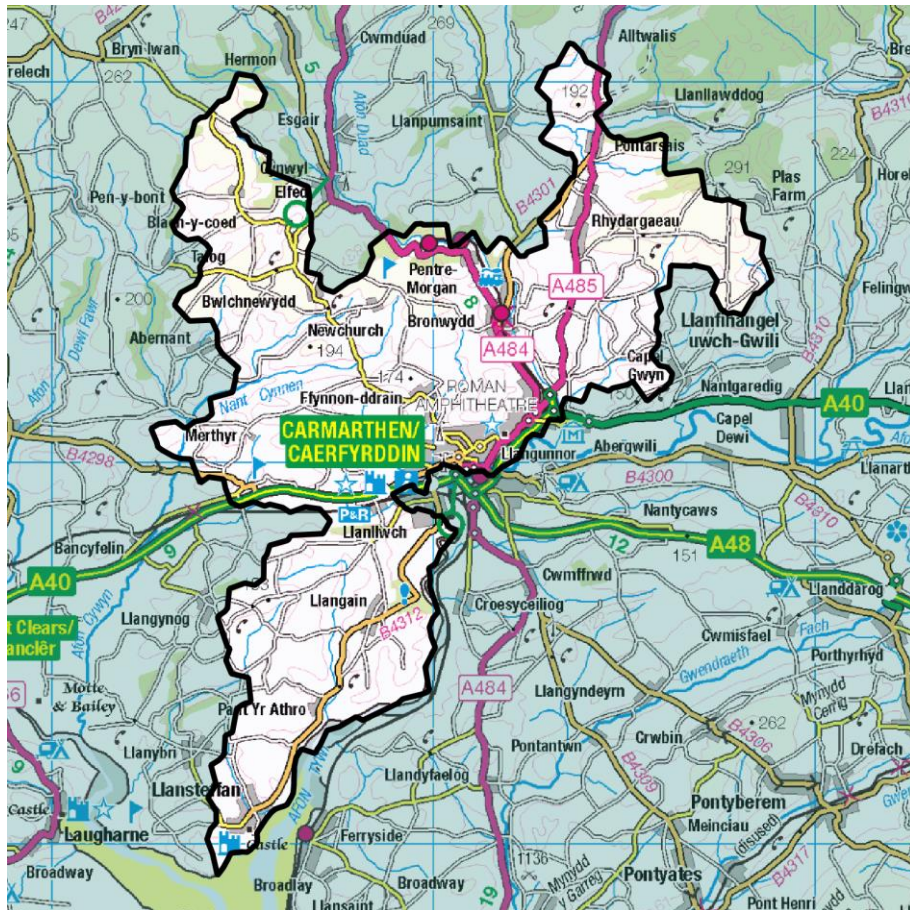
is the dedicated scheme page for this zone on the Flexible

Power website, here you can view;

- Availability windows
- Monthly profiles
- Service overview
- Valuation tool
- Postcode checker
- Register interest



Flexibility Analysis Report for CMZ_T4A_SWA_0004 – Trevaughan



Products	Season	MW Peak	Response
Secure & Restore	Winter	3.01	D↓ G↑

More information about this zone:

https://www.flexiblepower.co.uk/wpd-scheme/CMZ_T4A_SWA_0004/2022

is the dedicated scheme page for this zone on the Flexible

Power website, here you can view;

- Availability windows
- Monthly profiles
- Service overview
- Valuation tool
- Postcode checker
- Register interest



Flexibility Analysis Report for CMZ_T3A_SWE_0005 - Bridgwater/Street



Products	Season	MW Peak	Response
Dynamic & Restore	Summer	15.06	D↓ G↑

More information about this zone:

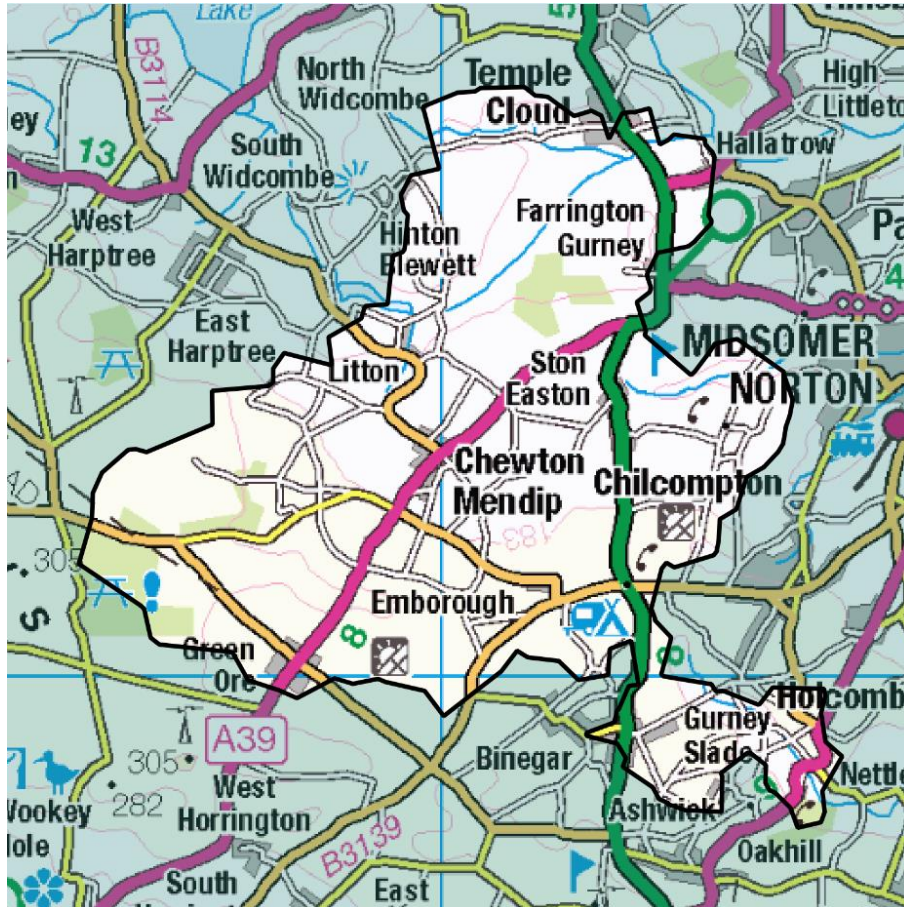
https://www.flexiblepower.co.uk/wpd-scheme/CMZ_T3A_SWE_0005/2022

is the dedicated scheme page for this zone on the Flexible Power website, here you can view;

- Availability windows
- Monthly profiles
- Service overview
- Valuation tool
- Postcode checker
- Register interest



Flexibility Analysis Report for CMZ_T6B_SWE_0026 - Chewton Mendip



Products	Season	MW Peak	Response
Secure & Restore	Winter	0.05	D↓ G↑

More information about this zone:

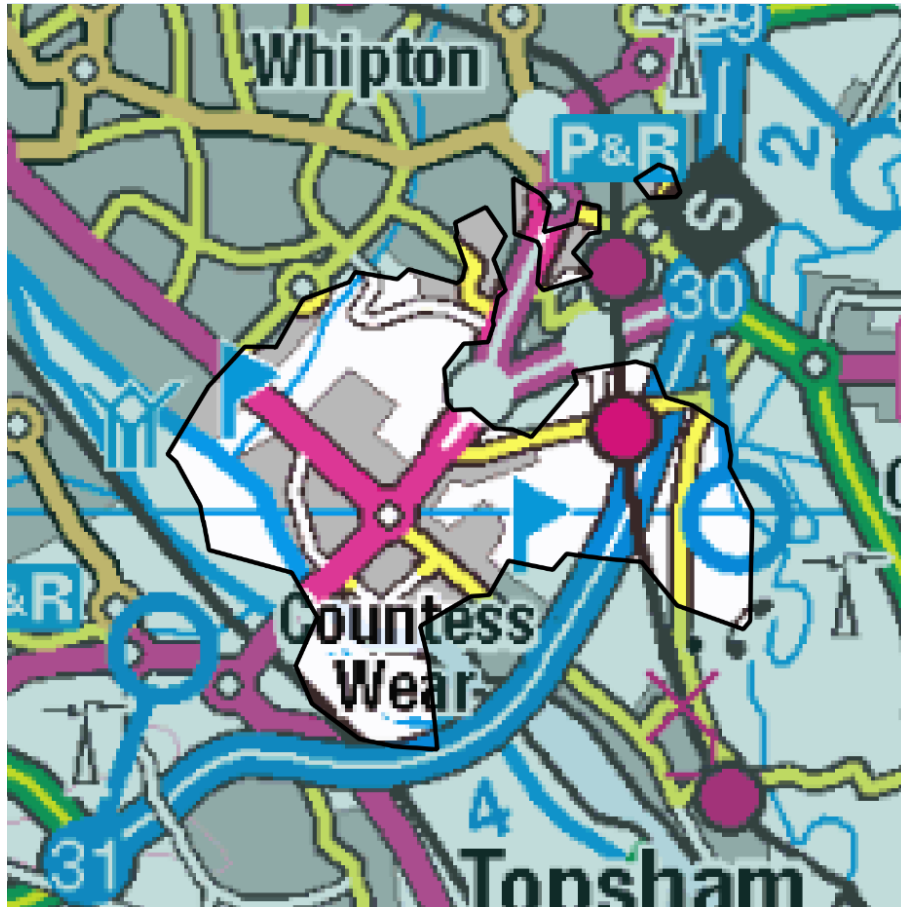
https://www.flexiblepower.co.uk/wpd-scheme/CMZ_T6B_SWE_0026/2022

is the dedicated scheme page for this zone on the Flexible Power website, here you can view;

- Availability windows
- Monthly profiles
- Service overview
- Valuation tool
- Postcode checker
- Register interest



Flexibility Analysis Report for CMZ_T6B_SWE_0023 - Countess Wear



Products	Season	MW Peak	Response
Secure & Restore	Winter	0.91	D↓ G↑

More information about this zone:

https://www.flexiblepower.co.uk/wpd-scheme/CMZ_T6B_SWE_0023/2022

is the dedicated scheme page for this zone on the Flexible

Power website, here you can view;

- Availability windows
- Monthly profiles
- Service overview
- Valuation tool
- Postcode checker
- Register interest



Flexibility Analysis Report for CMZ_T5B_SWE_0017 - East Yelland



Products	Season	MW Peak	Response
Dynamic & Restore	Winter	6.89	D↓ G↑

More information about this zone:

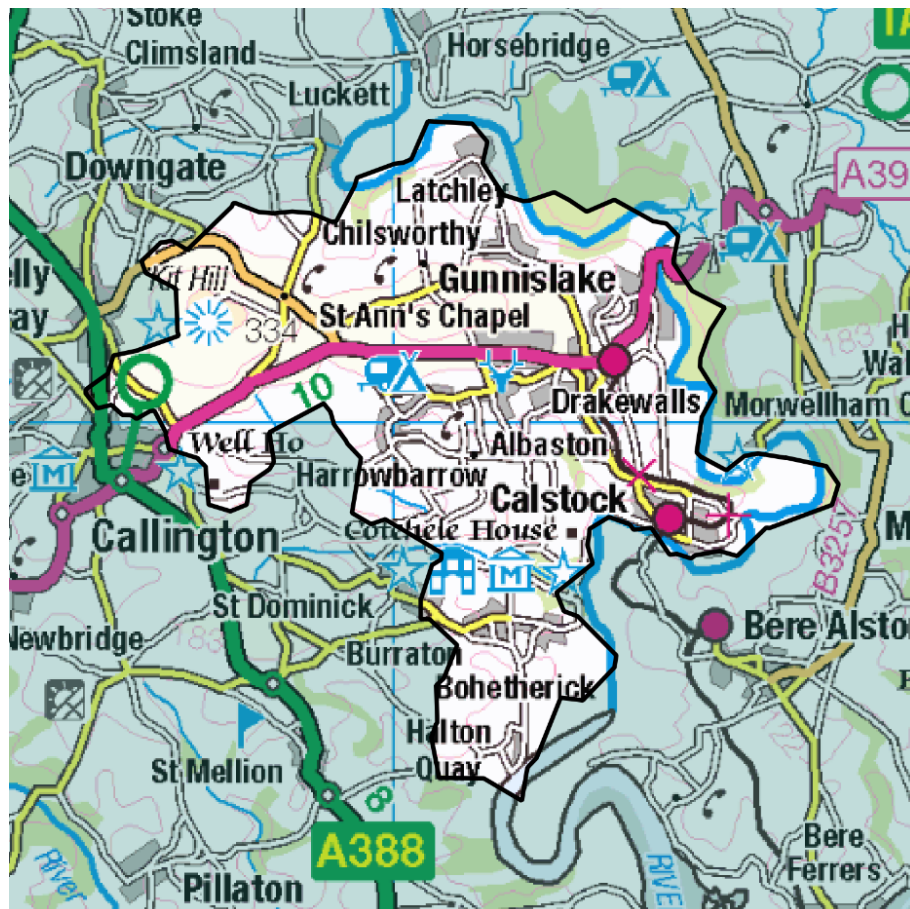
https://www.flexiblepower.co.uk/wpd-scheme/CMZ_T5B_SWE_0017/2022

is the dedicated scheme page for this zone on the Flexible Power website, here you can view;

- Availability windows
- Monthly profiles
- Service overview
- Valuation tool
- Postcode checker
- Register interest



Flexibility Analysis Report for CMZ_T6B_SWE_0022 - Gunnislake



Products	Season	MW Peak	Response
Secure & Restore	Winter	1.24	D↓ G↑

More information about this zone:

https://www.flexiblepower.co.uk/wpd-scheme/CMZ_T6B_SWE_0022/2022

is the dedicated scheme page for this zone on the Flexible Power website, here you can view;

- Availability windows
- Monthly profiles
- Service overview
- Valuation tool
- Postcode checker
- Register interest

Flexibility Analysis Report for CMZ_T3B_SWE_0007 - Hayle – Camborne



Products	Season	MW Peak	Response
Dynamic & Restore	Winter/Summer	51.24	D↓ G↑

More information about this zone:

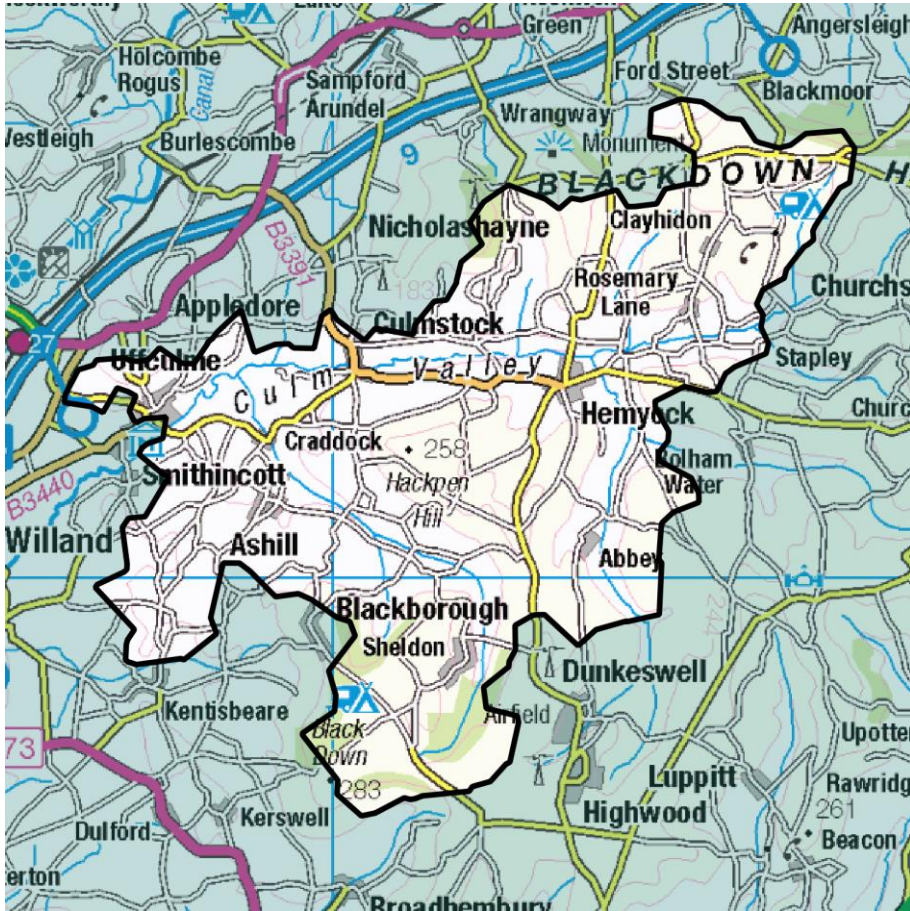
https://www.flexiblepower.co.uk/wpd-scheme/CMZ_T3B_SWE_0007/2022

is the dedicated scheme page for this zone on the Flexible Power website, here you can view;

- Availability windows
- Monthly profiles
- Service overview
- Valuation tool
- Postcode checker
- Register interest



Flexibility Analysis Report for CMZ_T5B_SWE_0018 – Hemyock



Products	Season	MW Peak	Response
Dynamic & Restore	Winter/Summer	1.37	D↓ G↑

More information about this zone:

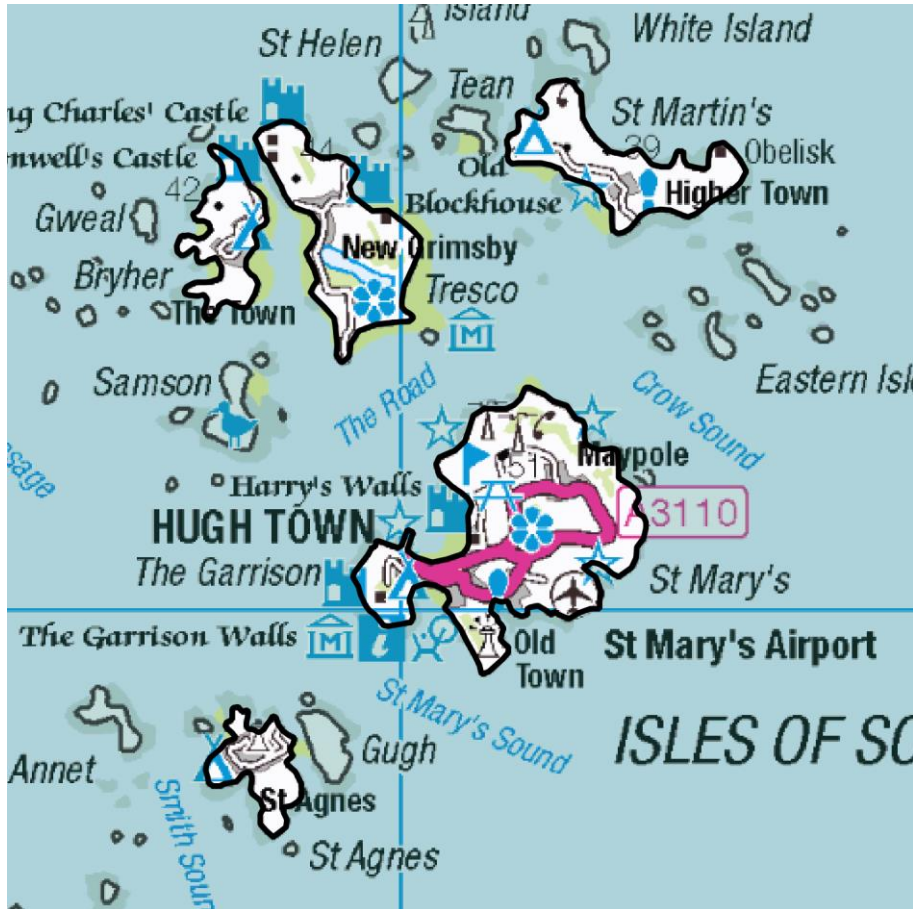
https://www.flexiblepower.co.uk/wpd-scheme/CMZ_T5B_SWE_0018/2022

is the dedicated scheme page for this zone on the Flexible Power website, here you can view;

- Availability windows
- Monthly profiles
- Service overview
- Valuation tool
- Postcode checker
- Register interest



Flexibility Analysis Report for CMZ_T3B_SWE_0008 - Isles of Scilly



Products	Season	MW Peak	Response
Secure & Restore	Winter	0.31	D↓ G↑

More information about this zone:

https://www.flexiblepower.co.uk/wpd-scheme/CMZ_T3B_SWE_0008/2022

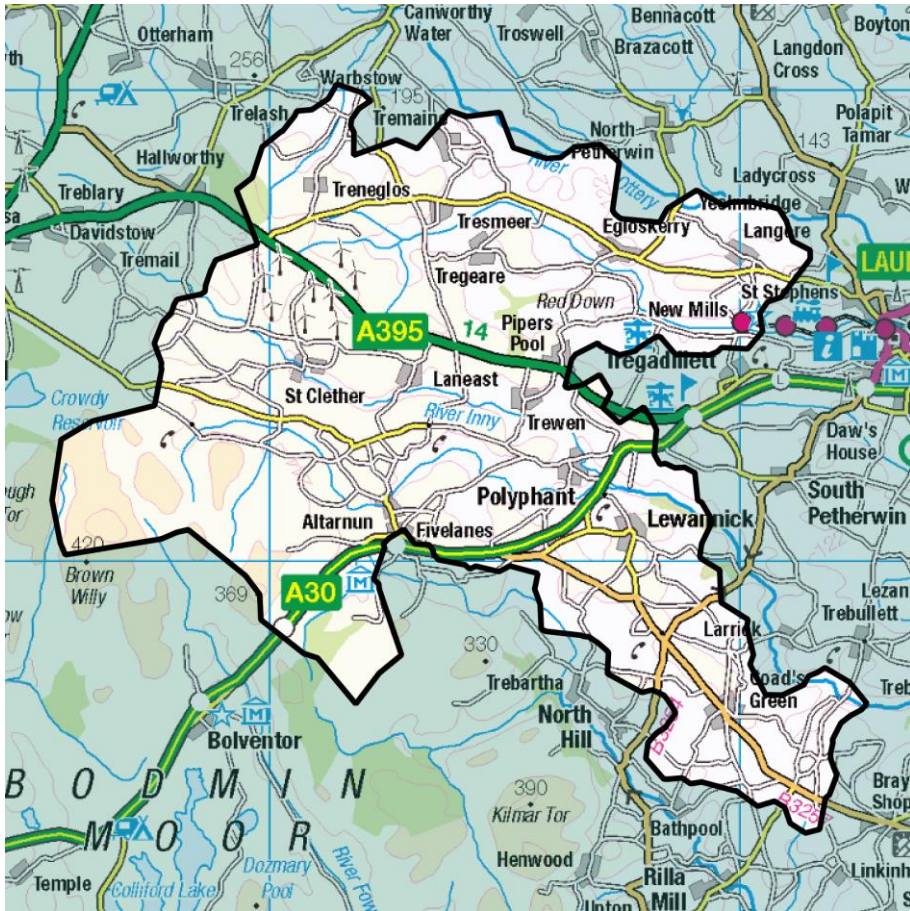
is the dedicated scheme page for this zone on the Flexible

Power website, here you can view;

- Availability windows
- Monthly profiles
- Service overview
- Valuation tool
- Postcode checker
- Register interest



Flexibility Analysis Report for CMZ_T6A_SWE_0021 - Laneast



Products	Season	MW Peak	Response
Secure & Restore	Winter	0.32	D↓ G↑

More information about this zone:

https://www.flexiblepower.co.uk/wpd-scheme/CMZ_T6A_SWE_0021/2022

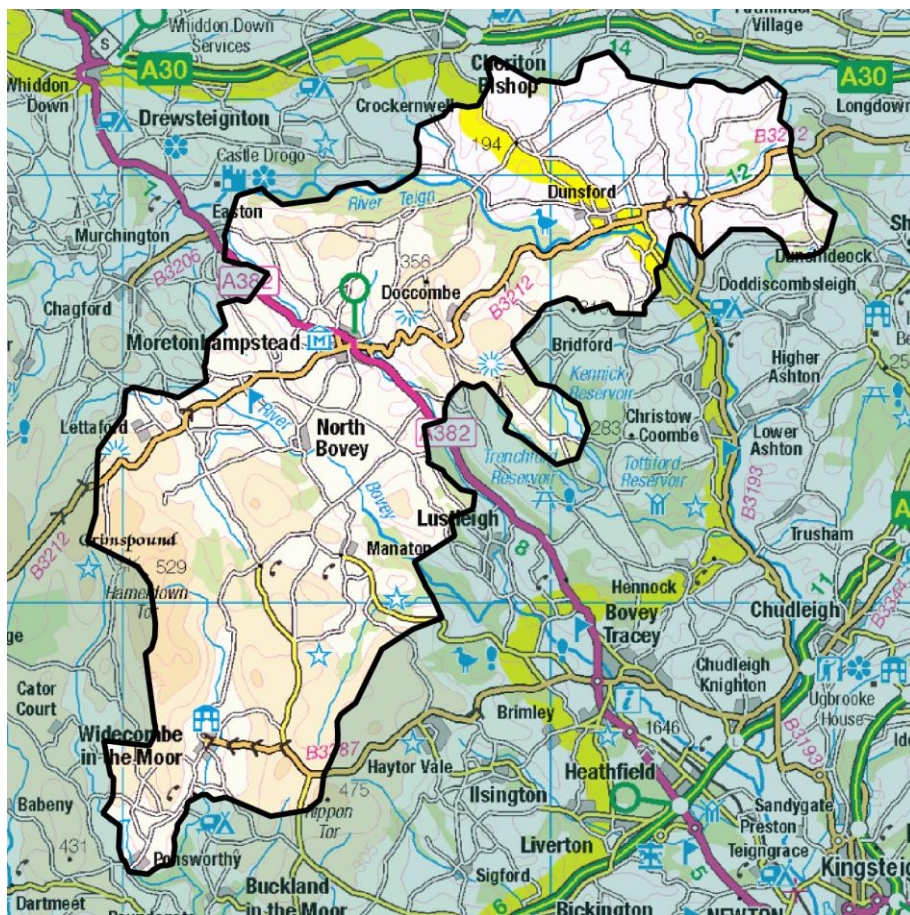
is the dedicated scheme page for this zone on the Flexible

Power website, here you can view;

- Availability windows
- Monthly profiles
- Service overview
- Valuation tool
- Postcode checker
- Register interest



Flexibility Analysis Report for CMZ_T4A_SWE_0009 – Moretonhampstead



Products	Season	MW Peak	Response
Dynamic & Restore	Winter	0.82	D↓ G↑

More information about this zone:

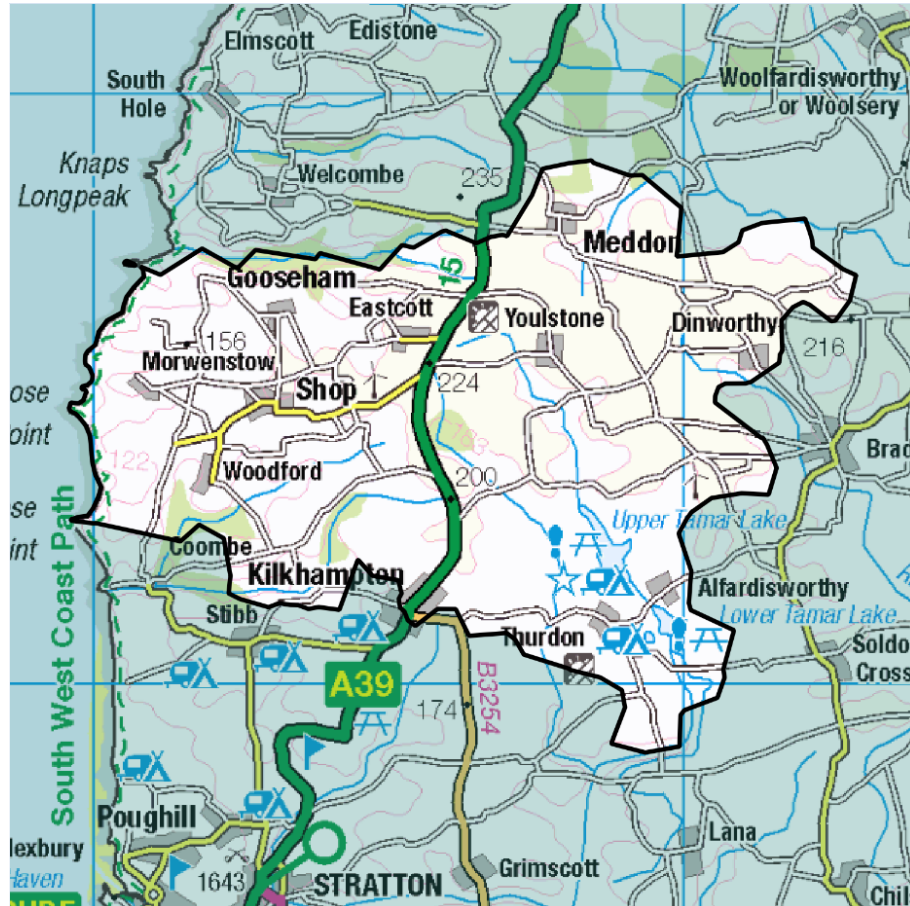
https://www.flexiblepower.co.uk/wpd-scheme/CMZ_T4A_SWE_0009/2022

is the dedicated scheme page for this zone on the Flexible Power website, here you can view;

- Availability windows
- Monthly profiles
- Service overview
- Valuation tool
- Postcode checker
- Register interest



Flexibility Analysis Report for CMZ_T6B_SWE_0025 - Morwenstow



Products	Season	MW Peak	Response
Dynamic & Restore	Winter	1.15	D↓ G↑

More information about this zone:

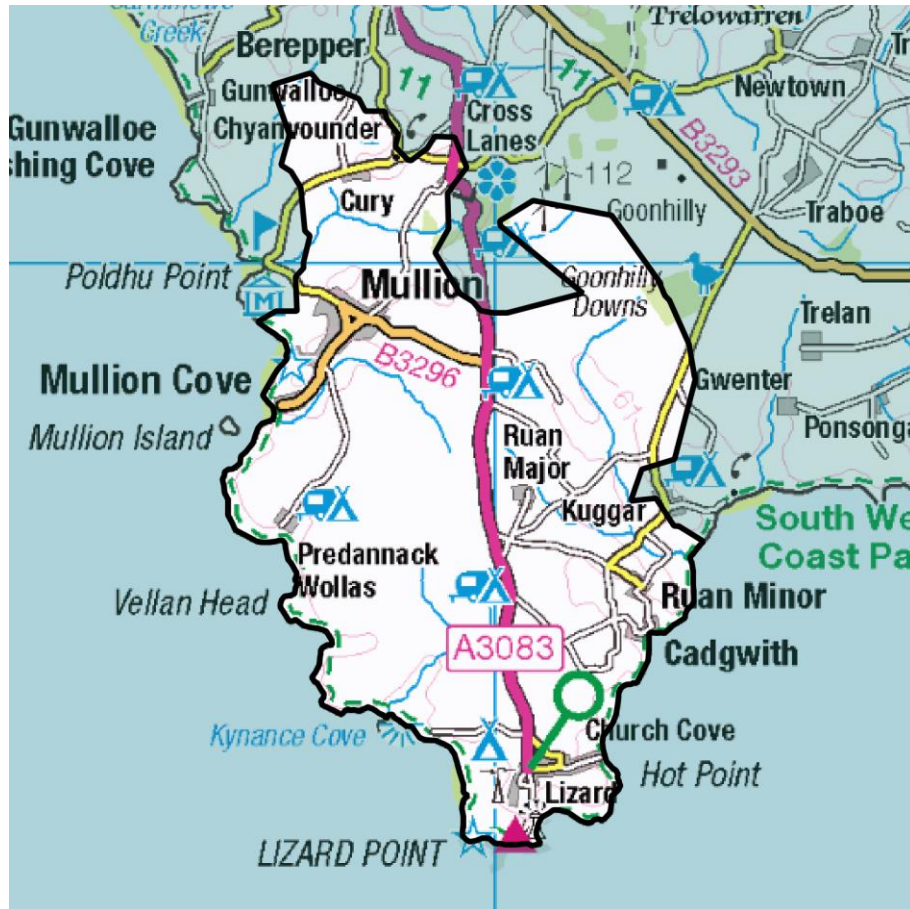
https://www.flexiblepower.co.uk/wpd-scheme/CMZ_T6B_SWE_0025/2022

is the dedicated scheme page for this zone on the Flexible Power website, here you can view;

- Availability windows
- Monthly profiles
- Service overview
- Valuation tool
- Postcode checker
- Register interest



Flexibility Analysis Report for CMZ_T5B_SWE_0019 – Mullion



Products	Season	MW Peak	Response
Secure & Restore	Winter	1.17	D↓ G↑

More information about this zone:

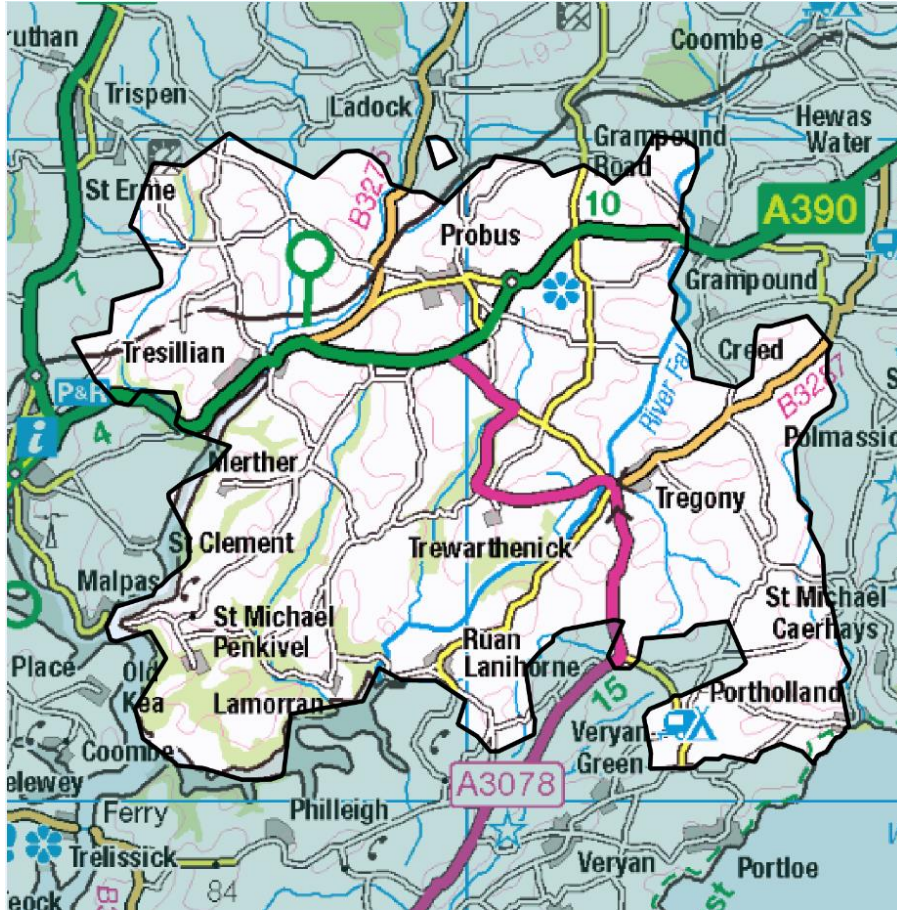
https://www.flexiblepower.co.uk/wpd-scheme/CMZ_T5B_SWE_0019/2022

is the dedicated scheme page for this zone on the Flexible Power website, here you can view;

- Availability windows
- Monthly profiles
- Service overview
- Valuation tool
- Postcode checker
- Register interest



Flexibility Analysis Report for CMZ_T6B_SWE_0024 - Probus



Products	Season	MW Peak	Response
Secure & Restore	Winter	10.66	D↓ G↑

More information about this zone:

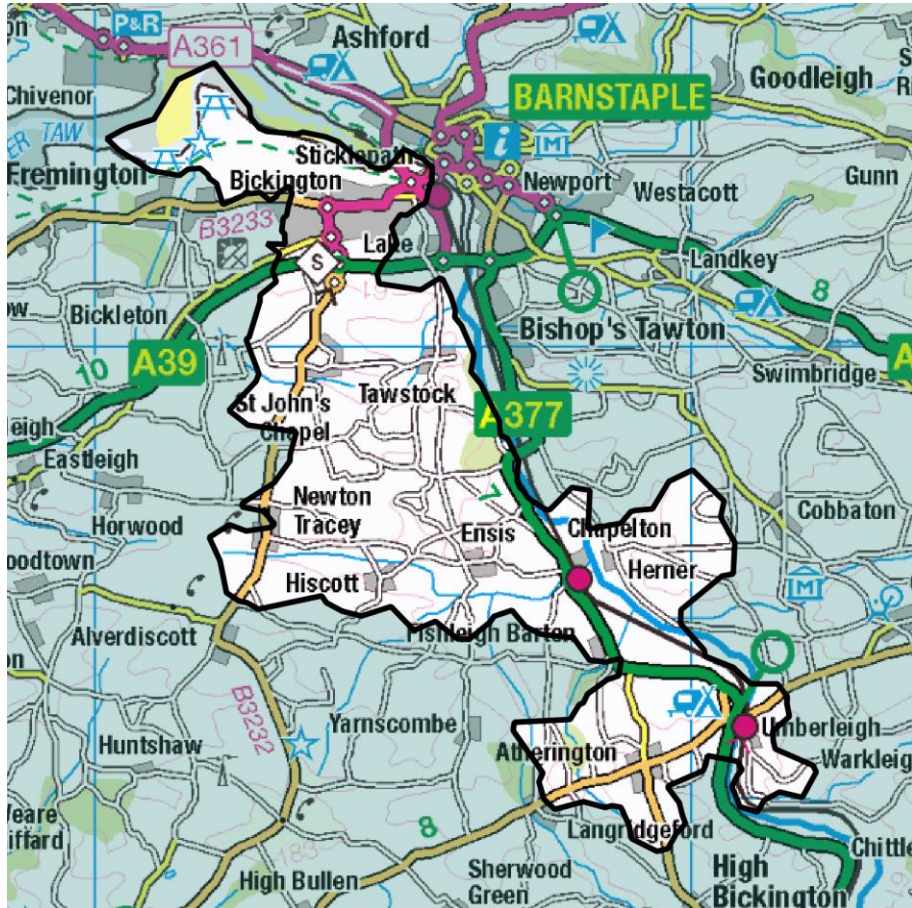
https://www.flexiblepower.co.uk/wpd-scheme/CMZ_T6B_SWE_0024/2022

is the dedicated scheme page for this zone on the Flexible Power website, here you can view;

- Availability windows
- Monthly profiles
- Service overview
- Valuation tool
- Postcode checker
- Register interest



Flexibility Analysis Report for CMZ_T5A_SWE_0015 – Roundswell



Products	Season	MW Peak	Response
Secure & Restore	Winter/Summer	1.70	D↓ G↑

More information about this zone:

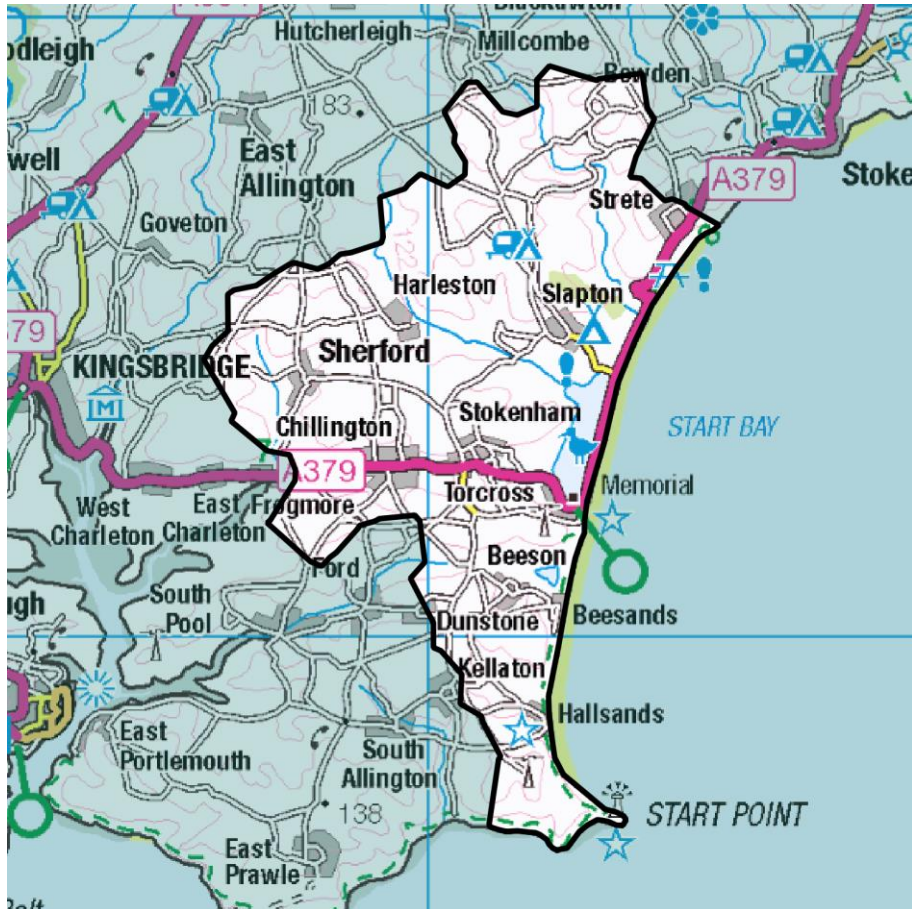
https://www.flexiblepower.co.uk/wpd-scheme/CMZ_T5A_SWE_0015/2022

is the dedicated scheme page for this zone on the Flexible Power website, here you can view;

- Availability windows
- Monthly profiles
- Service overview
- Valuation tool
- Postcode checker
- Register interest



Flexibility Analysis Report for CMZ_T6A_SWE_0020 – Stokenham



Products	Season	MW Peak	Response
Secure & Restore	Winter	0.30	D↓ G↑

More information about this zone:

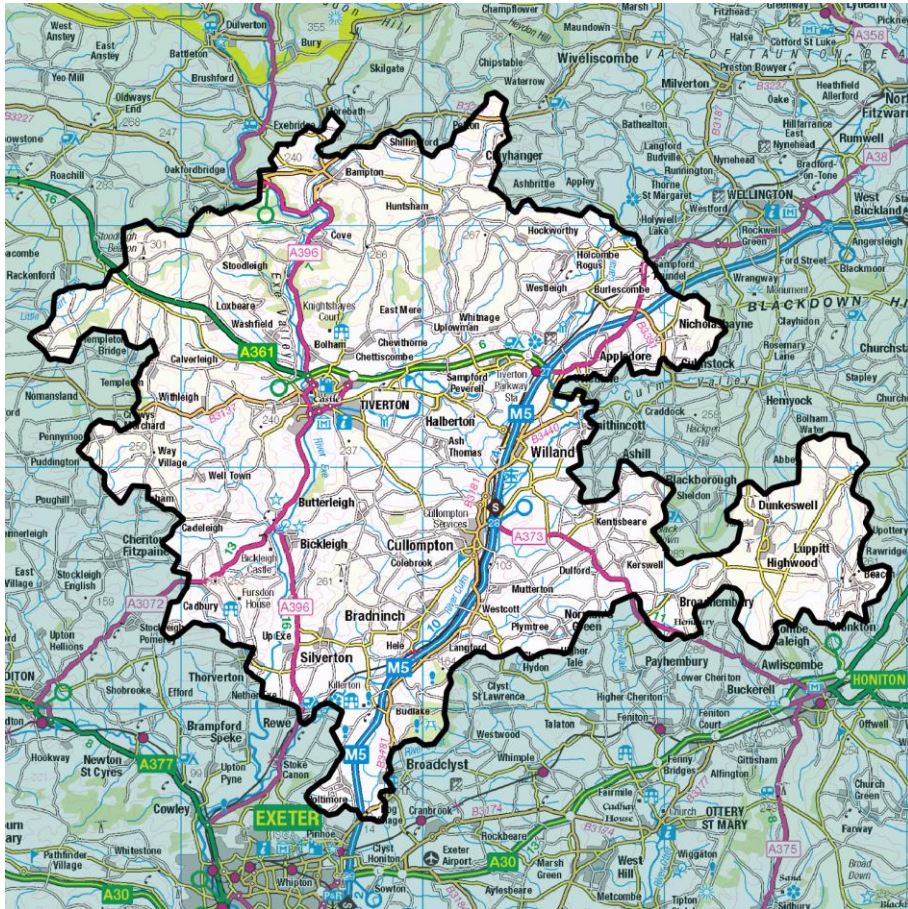
https://www.flexiblepower.co.uk/wpd-scheme/CMZ_T6A_SWE_0020/2022

is the dedicated scheme page for this zone on the Flexible Power website, here you can view;

- Availability windows
- Monthly profiles
- Service overview
- Valuation tool
- Postcode checker
- Register interest



Flexibility Analysis Report for CMZ_T4A_SWE_0010 – Tiverton



Products	Season	MW Peak	Response
Dynamic & Restore	Winter	11.82	D↓ G↑

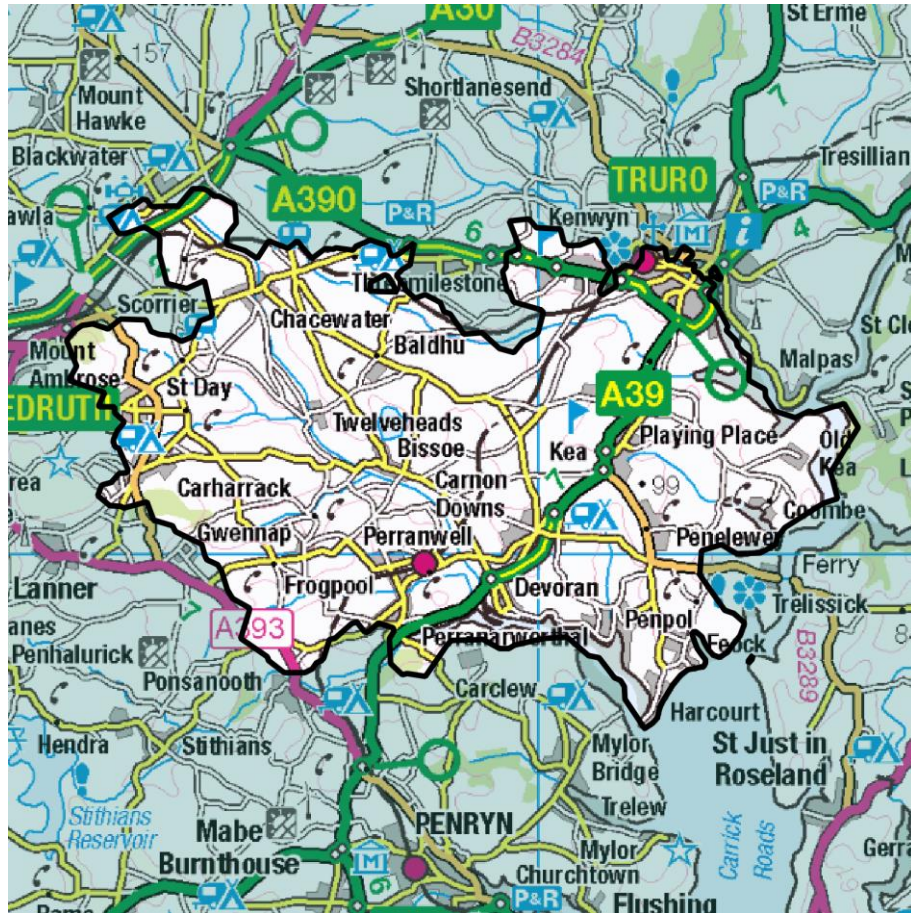
More information about this zone:

https://www.flexiblepower.co.uk/wpd-scheme/CMZ_T4A_SWE_0010/2022 is the dedicated scheme page for this zone on the Flexible Power website, here you can view;

- Availability windows
- Monthly profiles
- Service overview
- Valuation tool
- Postcode checker
- Register interest



Flexibility Analysis Report for CMZ_T5A_SWE_0016 - Truro - Truro Treyew



Products	Season	MW Peak	Response
Dynamic & Restore	Winter	6.70	D↓ G↑

More information about this zone:

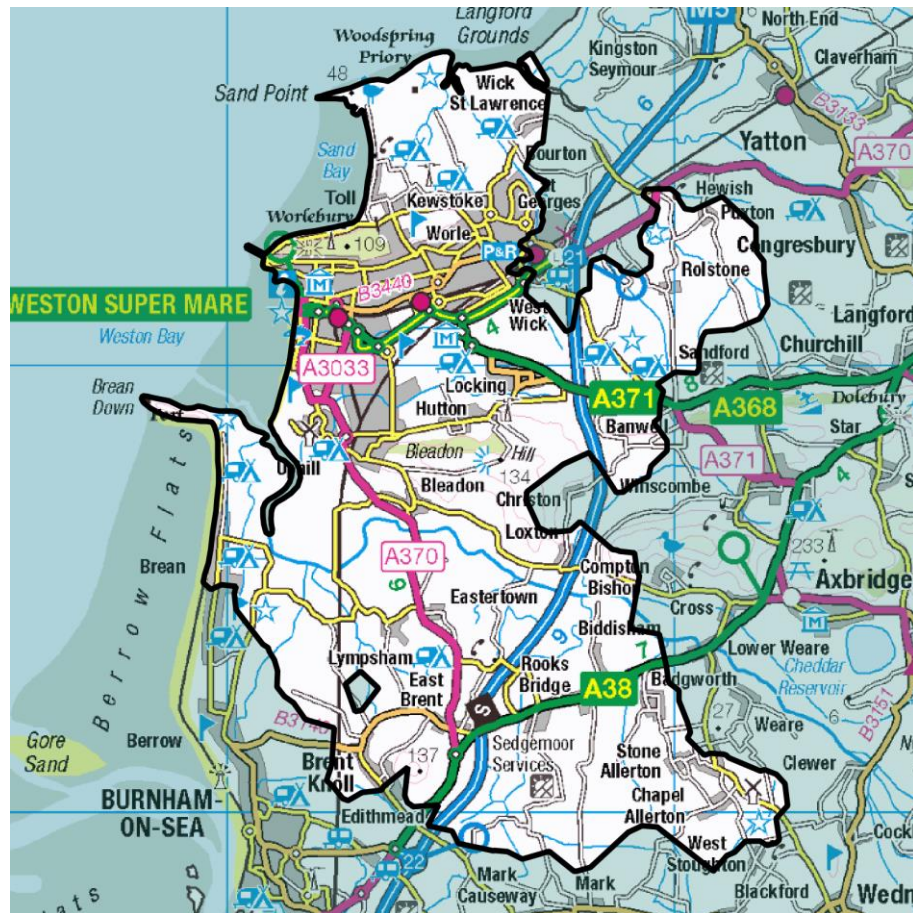
https://www.flexiblepower.co.uk/wpd-scheme/CMZ_T5A_SWE_0016/2022

is the dedicated scheme page for this zone on the Flexible Power website, here you can view;

- Availability windows
- Monthly profiles
- Service overview
- Valuation tool
- Postcode checker
- Register interest



Flexibility Analysis Report for CMZ_T4A_SWE_0013 - Weston Super Mare



Products	Season	MW Peak	Response
Dynamic & Restore	Winter	8.49	D↓ G↑

More information about this zone:

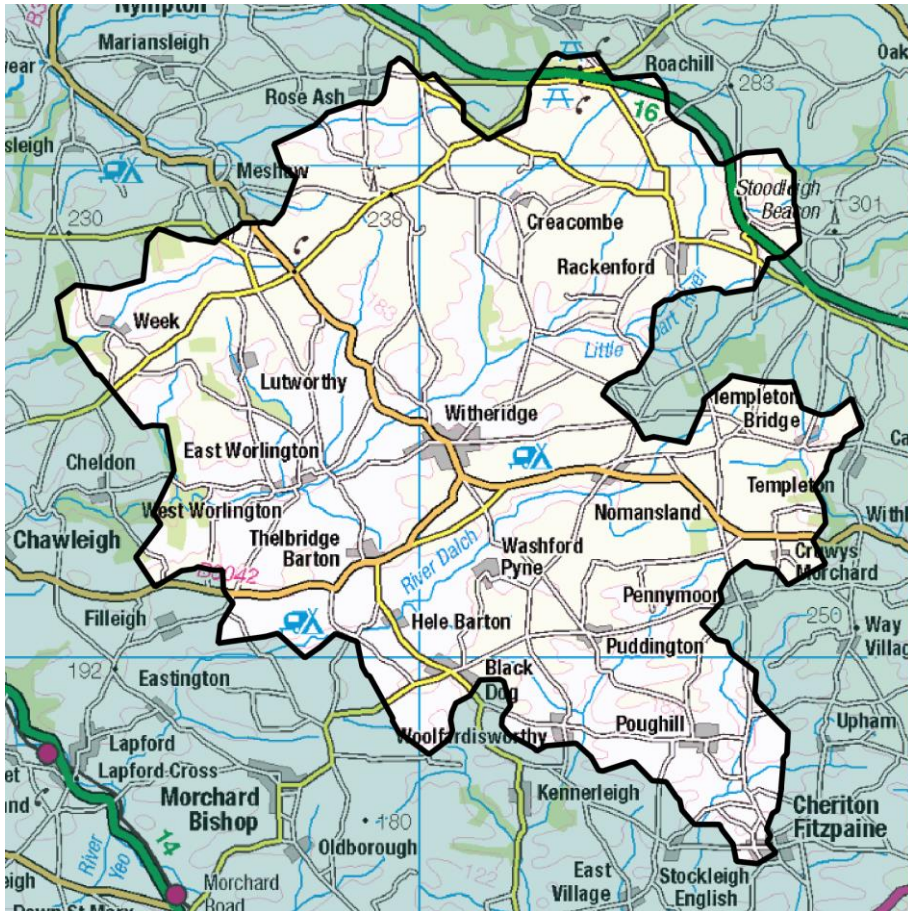
https://www.flexiblepower.co.uk/wpd-scheme/CMZ_T4A_SWE_0013/2022

is the dedicated scheme page for this zone on the Flexible Power website, here you can view;

- Availability windows
- Monthly profiles
- Service overview
- Valuation tool
- Postcode checker
- Register interest



Flexibility Analysis Report for CMZ_T4A_SWE_0014 - Witheridge



Products	Season	MW Peak	Response
Secure & Restore	Winter/Summer	0.64	D↓ G↑

More information about this zone:

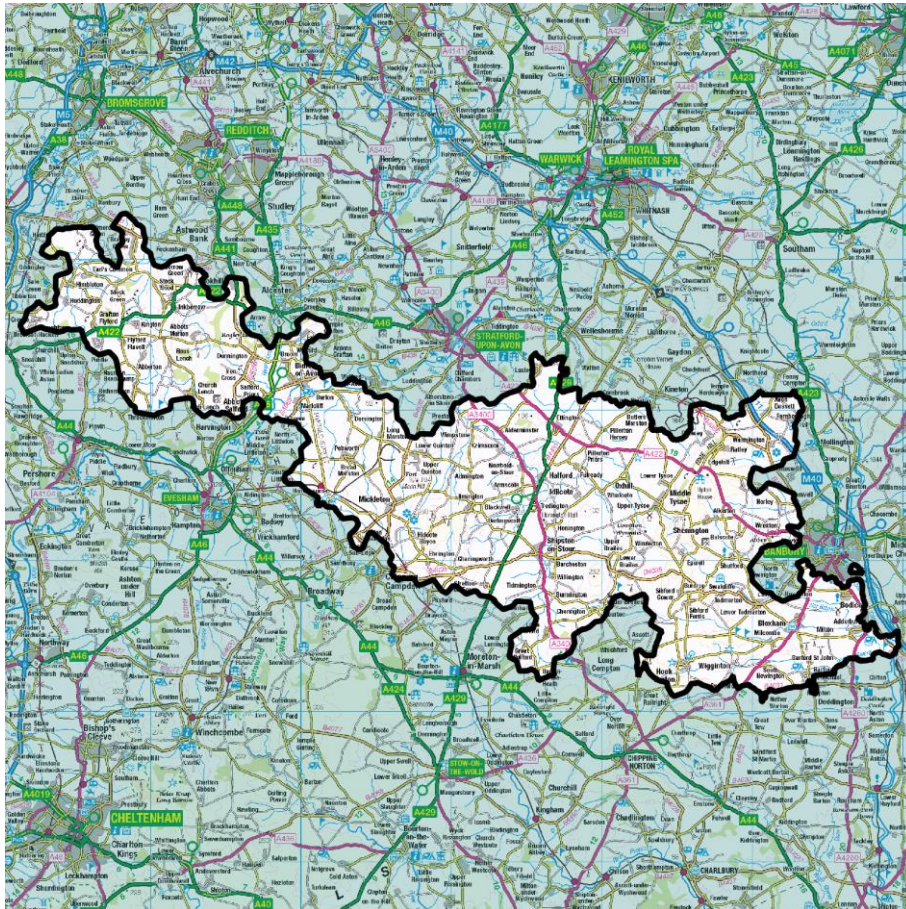
https://www.flexiblepower.co.uk/wpd-scheme/CMZ_T4A_SWE_0014/2022

is the dedicated scheme page for this zone on the Flexible

Power website, here you can view;

- Availability windows
- Monthly profiles
- Service overview
- Valuation tool
- Postcode checker
- Register interest

Flexibility Analysis Report for CMZ_T5A_WM_0008 – Feckenham South



Products	Season	MW Peak	Response
Dynamic & Restore	Winter	16.61	D↓ G↑

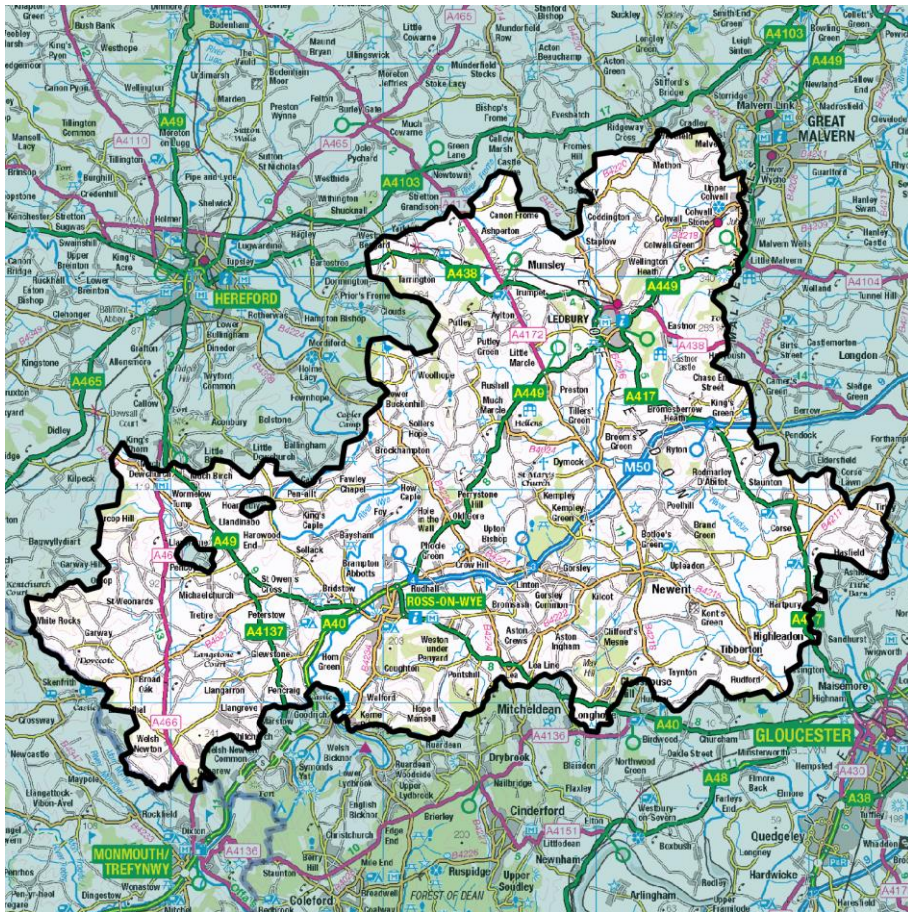
More information about this zone:

https://www.flexiblepower.co.uk/wpd-scheme/CMZ_T5A_WM_0008/2022 is the dedicated scheme page for this zone on the Flexible Power website, here you can view;

- Availability windows
- Monthly profiles
- Service overview
- Valuation tool
- Postcode checker
- Register interest



Flexibility Analysis Report for CMZ_T4B_WM_0001 – Hereford – Ledbury Ring



Products	Season	MW Peak	Response
Secure & Restore	Winter	6.93	D↓ G↑

More information about this zone:

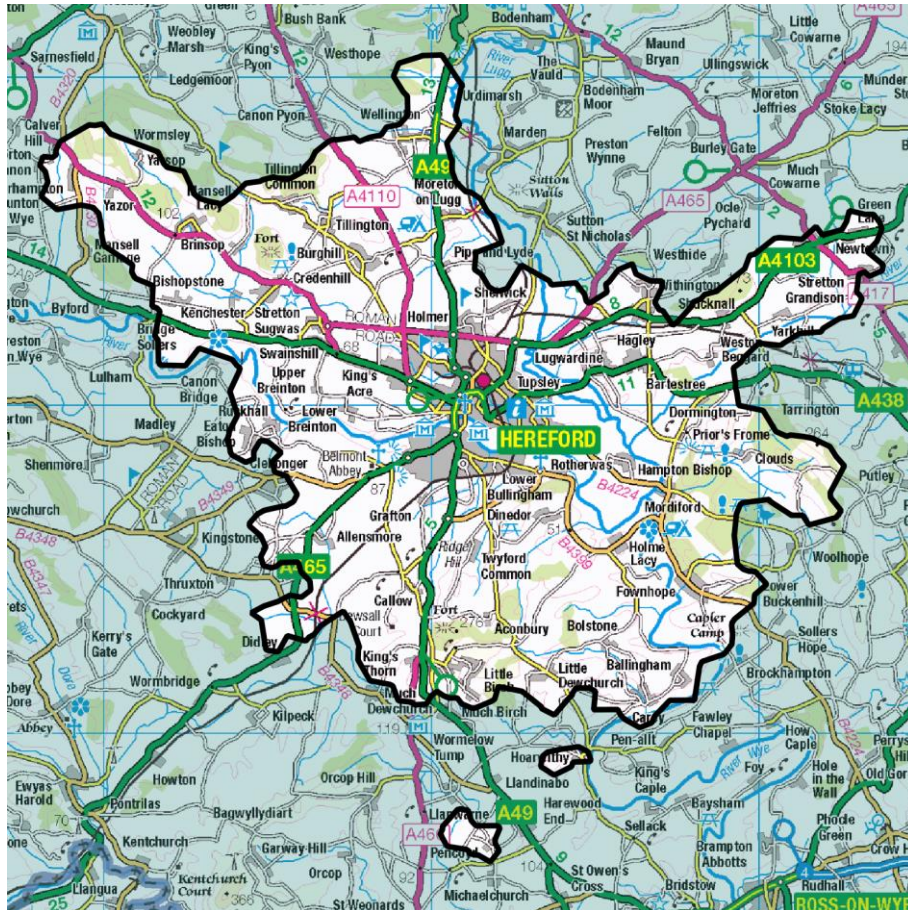
https://www.flexiblepower.co.uk/wpd-scheme/CMZ_T4B_WM_0001/2022

is the dedicated scheme page for this zone on the Flexible Power website, here you can view;

- Availability windows
- Monthly profiles
- Service overview
- Valuation tool
- Postcode checker
- Register interest



Flexibility Analysis Report for CMZ_T5A_WM_0009 – Hereford BSP



Products	Season	MW Peak	Response
Secure & Restore	Winter	5.08	D↓ G↑

More information about this zone:

https://www.flexiblepower.co.uk/wpd-scheme/CMZ_T5A_WM_0009/2022

is the dedicated scheme page for this zone on the Flexible Power website, here you can view;

- Availability windows
- Monthly profiles
- Service overview
- Valuation tool
- Postcode checker
- Register interest



Section 6 – Sources of further information

WPD delivers the procurement of demand response services through Flexible Power. The Flexible Power website is dedicated to providing visibility of the services WPD is looking to procure, it contains detailed information about active CMZs and supporting documentation including; the ENA's DSO service descriptions, the process for declaration and dispatch, payment methodology, contracting terms and API requirements.

The website can be viewed at www.flexiblepower.co.uk.

Should you require any further information please contact the Flexible Power team: WPDFlexiblePower@westernpower.co.uk.